

ENERGY
WE ENERGIZE
THE WORLD

LIGHT RAIL AND TRAMWAY CATALOGUE

SOLUTIONS FOR
LIGHT RAIL CATENARY SYSTEMS
REVISION: REV1

Content

Introduction	5
Cantilever Assemblies	6
Bracket Arm Normal Loads Pull Off	6
Bracket Arm Normal Loads Push Off	7
Bracket Arm High Load Pull Off	8
Bracket Arm Casting High Load Push Off	9
Cantilever Assemblies - Pull Off	10
Cantilever Assemblies - Push Off	11
Cantilever Components	12
Bracket Arm Casting	12
Brace Arm	13
Brace Arm Support	14
Catenary Support Assembly	16
Contact Wire Support	17
Depot Contact Wire Support	19
10 mm Chain Link	20
Quick Link	21
10 mm Delta Quick Link	24
Eye Clamp	25
Hook Clamp	27
Polymide Cable Hanger - Parafil Rope	28
Binding Cylinder	29
Stitch Support Assembly	30
Registration Arm Assembly	32
Insulated Registration Arm Assembly	34
Thimble and Ferrule	36
Clamps	37
Conical Coupling CuNiSi	37
Connection Clamp GPF - 70/150 M1	38
Single Contact Wire Clamp 80 - 150 mm	39
Twin Contact Wire Clamp	40
Deltram Nipple	41
Sitch Lever Assembly	42
Wire Clamp	43
Snail Clamp	44

Droppers	48
Dropper Assemblies	48
Copper Lug	49
Cable Lug	50
Compression Sleeve	51
Cold Forged Crimped Dropper Clamp	52
Dropper Clamp for Contact Wire	53
Dropper Clamp for Messenger Wire	54
Hot Forged Bolted Dropper Clamp	55
Rigid Dropper Clamp	56
Thimble	57
Insulators	58
Cantilever Insulators	58
Tension Insulators	60
GRP Insulator	62
Insulated Knuckle Bar Assembly	63
Insulated Stitch	64
Insulated Stitch with Nuggets	65
Insulated Stitch Assembly Single Contact	66
Insulated Stitch Assembly Twin Contact Wire	67
Insulated Stitch Assembly with Levers Single Contact	68
Insulated Stitch Assembly with Levers Twin Contact Wire	69
Insulated Stitch Assembly with Nuggets Single Contact Wire	70
Insulated Stitch Assembly with Nuggets Twin Contact Wire	71
Insulated Stitch Assembly Levers with Nuggets Single Contact Wire	72
Insulated Stitch Assembly Levers with Nuggets Twin Contact Wire	73
Pole Brackets	74
Overlap Bracket Assembly	74
Pole Bracket Assembly	75
Universal Single Cantilever Bracket	76
Universal Single Cantilever Back Bracket	77
Surge Arrestors	78
Surge Arrestors	78
Surge Arrestor Mounting Bracket	79
Tensioning	80
Tensorex C+	80
Tensorex C+ 3D	81
Tensorex Sense	82

Tubes	83
Aluminium Tubes	83
Steel Tubes	84
Tube Caps	85
Pole Caps	86
Turnbuckles	87
Turnbuckles EYE - EYE	87
Turnbuckles JAW - JAW	88
Turnbuckles EYE - JAW	89
Backstay	90
Anchor Tie Rod Assembly	90
Balance Plates	91
Spares	92
10 mm Pins	93
Standard Pin	94
16 mm Pin Bracket Foot	95
Round Eye Bolt	96
Our Catlogues	97
Locations	98
Contact Page	99

1 INTRODUCTION

This Illustrated Parts Catalogue should be used solely for the purpose of product identification. All technical data including dimensions, product application, material specification and load properties should be checked by the buyer at time of enquiry. Mosdorfer Rail reserve the right to modify or update the contents of this document without prior notification.

2 SCOPE

The document covers the components and materials used in the Trolley Wire and Catenary equipment system

3 DEFINITIONS OF ABBREVIATIONS AND TERMS USED

BW Reference

Brecknell Willis Part Number

CANTILEVER ASSEMBLIES

Bracket Arm Normal Loads Pull Off

Part Number

- RCS-25-A-072

Application

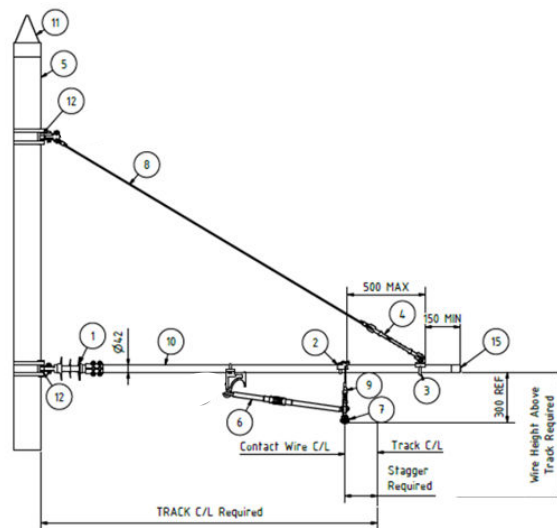
- Bracket arm assembly, normal load / pull off

Material

- See table for page reference, to see components in more detail



Item	Product Description	Page Reference
1	Cantilever insulator 95/380 55 - 70 Tube and Tongue 8kN	58
2	Stitch Support Assembly – Ø42	30
3	Bracket Arm Casting – Ø42	12
4	Tension Insulator – 125/240 – Clevis and Clevis – 20 kN	60
6	Registration Arm – Straight Light Rail	32
7	Twin Contact Wire Clamp 80 – 150 mm ²	40
8	6 mm Stainless Steel Wire Rope Thimble and Ferrule – 2250 Length	36
9	Insulated Stitch with Nugget Double Contact 1000	71
10	Ø42 Steel Tube – 2100 Length	84
11	Ø168 Pole Cap	86
15	Ø42 Tube Cap	85



Bracket Arm Normal Loads Push Off

Part Number

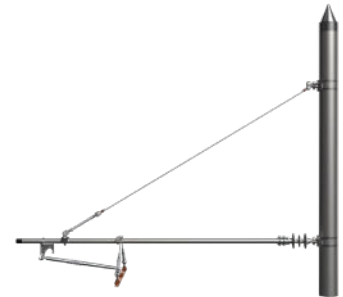
- RCS-25-A-073

Application

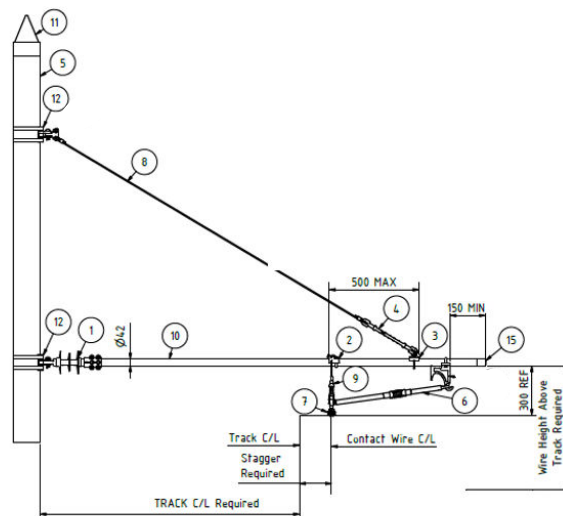
- Bracket arm assembly, normal load / push off

Material

- See table for page reference, to see components in more detail



Item	Product Description	Page Reference
1	Cantilever insulator 95/380 55 - 70 Tube and Tongue 8kN	58
2	Stitch Support Assembly – Ø42	30
3	Bracket Arm Casting – Ø42	12
4	Tension Insulator – 125/240 – Clevis and Clevis – 20 kN	60
6	Registration Arm – Straight Light Rail	32
7	Twin Contact Wire Clamp 80 – 150 mm ²	40
8	6 mm Stainless Steel Wire Rope Thimble and Ferrule – 2250 Length	36
9	Insulated Stitch with Nugget Double Contact 1000	71
10	Ø42 Steel Tube – 2600 Length	84
11	Ø168 Pole Cap	86
15	Ø42 Tube Cap	85



Bracket Arm High Load Pull Off

Part Number

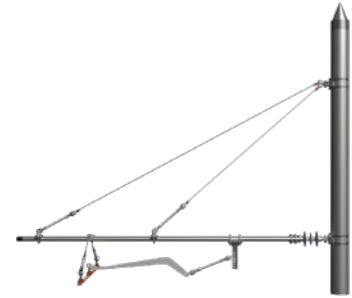
- RCS-25-A-074

Application

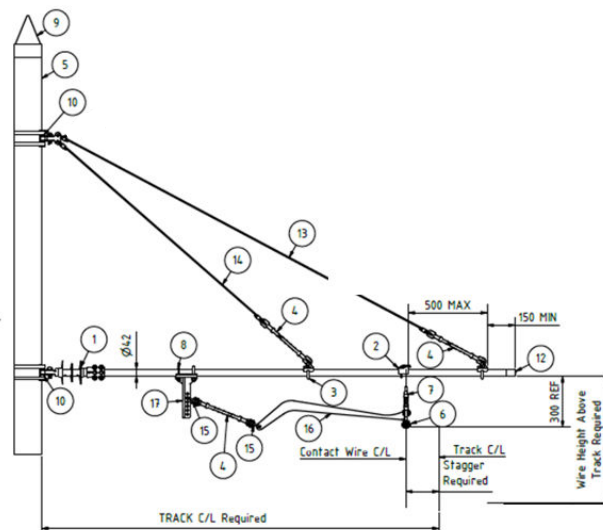
- Bracket arm assembly, high load / pull off

Material

- See table for page reference, to see components in more detail



Item	Product Description	Page Reference
1	Cantilever insulator 95/380 55 – 70 Tube and Tongue 8kN	58
2	Stitch Support Assembly – Ø42	30
3	Bracket Arm Casting – Ø42	12
4	Tension Insulator – 125/240 – Clevis and Clevis – 20 kN	61
6	Twin Contact Wire Clamp 80 – 150 mm ²	40
7	Insulated Stitch with Nugget Double Contact 1000	71
8	Ø42 Steel Tube – 2600 Length	84
9	Ø168 Pole Cap	86
12	Ø42 Tube Cap	85
13	6mm Stainless Steel Wire Rope Thimble & Ferrule - 2570 Length	36
14	6mm Stainless Steel Wire Rope Thimble & Ferrule - 1670 Length	36
15	10 mm Quick Link	23
16	Registration Arm Assembly	33
17	Braced Arm Support	14



Bracket Arm Casting High Load Push Off

Part Number

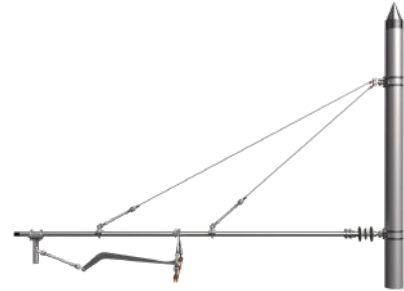
- RCS-25-A-075

Application

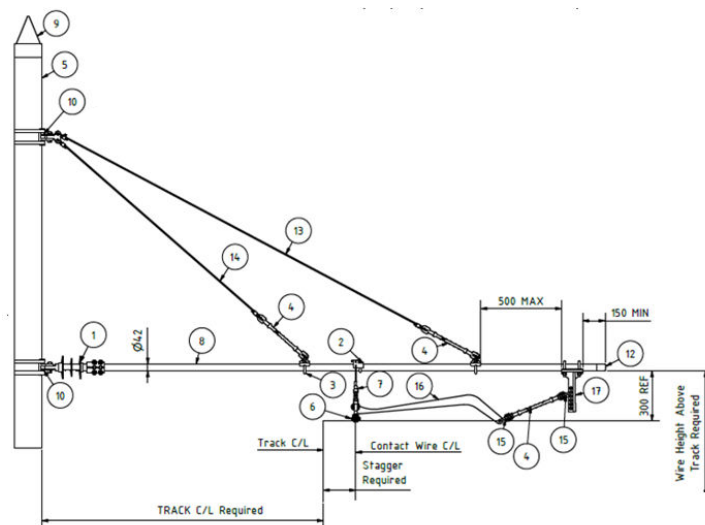
- Bracket arm assembly, high load / push off

Material

- See table for page reference, to see components in more detail



Item	Product Description	Page Reference
1	Cantilever insulator 95/380 55 – 70 Tube and Tongue 8kN	58
2	Stitch Support Assembly – Ø42	30
3	Bracket Arm Casting – Ø42	12
4	Tension Insulator – 125/240 – Clevis and Clevis – 20 kN	61
6	Twin Contact Wire Clamp 80 – 150 mm ²	40
7	Insulated Stitch with Nugget Double Contact 1000	71
8	Ø42 Steel Tube – 3200 Length	84
9	Ø168 Pole Cap	86
12	Ø42 Tube Cap	85
13	6mm Stainless Steel Wire Rope Thimble & Ferrule - 2570 Length	36
14	6mm Stainless Steel Wire Rope Thimble & Ferrule - 1670 Length	36
15	10 mm Quick Link	23
16	Registration Arm Assembly	33
17	Braced Arm Support	14



Cantilever Assemblies - Pull Off

Application

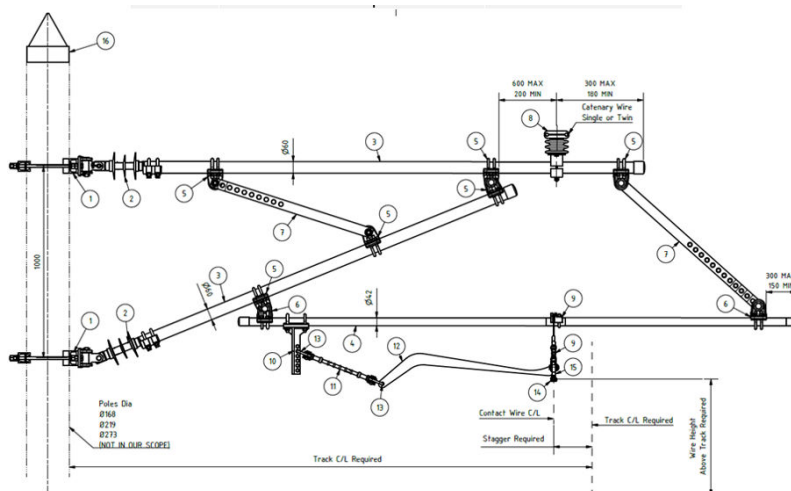
- Pull off Cantilever Assembly

Material

- See table for page reference, to see components in more detail.



Item	Product Description	Page Reference
1	Overlap Bracket Assembly	74
2	Cantilever Insulator	58
3	Ø60 Steel Tube	84
4	Ø42 Steel Tube	84
5	Eye Clamp Ø70 - Ø60	25
6	Eye Clamp Ø55 - Ø42	25
7	Brace Arm	13
8	Catenary Support Assembly	16
9	Stitch Support Assembly	30
10	Braced Arm Support	14
11	Tension Insulator	60
12	Registration Arm Assembly	32
13	10 mm Quick Link	23
14	Contact Wire Clamp	39
15	Deltram Nipple	41
16	Pole Cap	86



Cantilever Assemblies - Push Off

Application

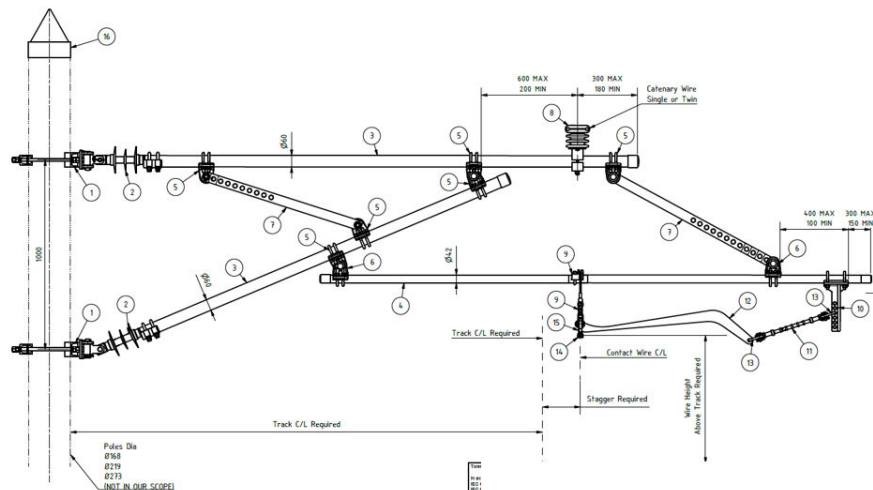
- Push off Cantilever Assembly

Material

- See table for page reference, to see components in more detail.



Item	Product Description	Page Reference
1	Overlap Bracket Assembly	74
2	Cantilever Insulator	58
3	Ø60 Steel Tube	84
4	Ø42 Steel Tube	84
5	Eye Clamp Ø70 - Ø60	25
6	Eye Clamp Ø55 - Ø42	25
7	Brace Arm	13
8	Catenary Support Assembly	16
9	Stitch Support Assembly	30
10	Braced Arm Support	14
11	Tension Insulator	60
12	Registration Arm Assembly	32
13	10 mm Quick Link	23
14	Contact Wire Clamp	39
15	Deltram Nipple	41
16	Pole Cap	86



CANTILEVER COMPONENTS

Bracket Arm Casting

Application

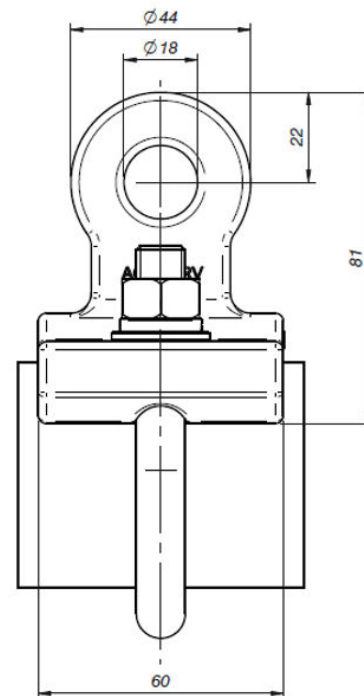
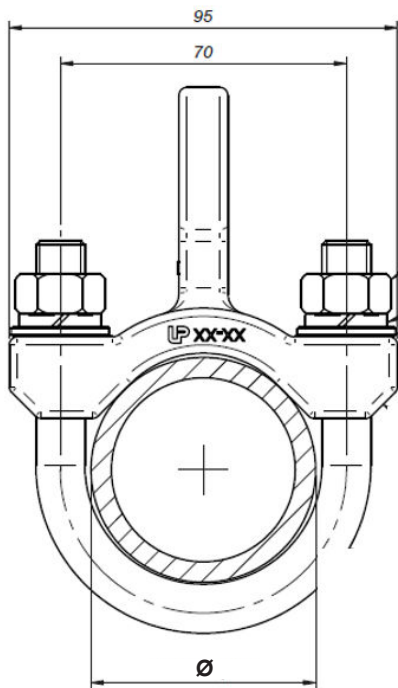
- This clamp is used for articulated connections.

Material

- Cast part: AlSi7Mg 0,6 T6 (UNE-EN 1706)
- Nuts: St Steel (A2-70) (EN ISO 3506)
- Washers: St. Steel (A2) (EN ISO 3506)
- U-bolt: St. Steel (A2-70) (EN ISO 3506)



Part Number	BW Reference	Description	Diameter Tube Ø (mm)
RCS-26-A-003	M40152-01-A	Supplied as a complete assembly.	42
ASM.A0-55TRV	-	Supplied as a complete assembly.	55
ASM.A0-60TRV	M40152-02-A	Supplied as a complete assembly.	60



Brace Arm

Application

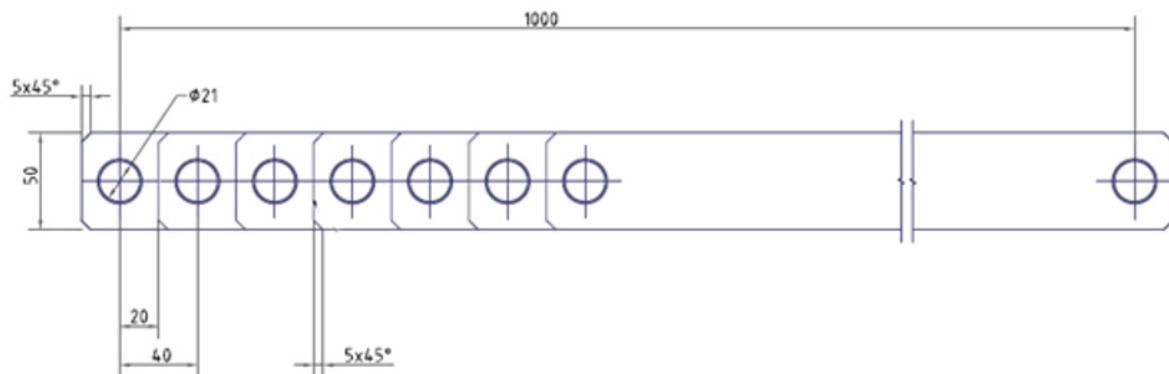
- Brace Arm

Material

- AISi7Mg0, 6 T6 (UNE-EN 1706)



Part Number	BW Reference	Weight
043258-00	-	1.998



Brace Arm Support

Application

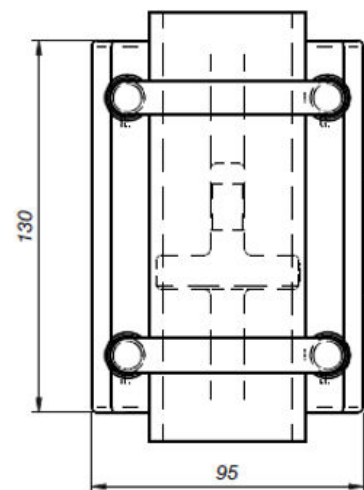
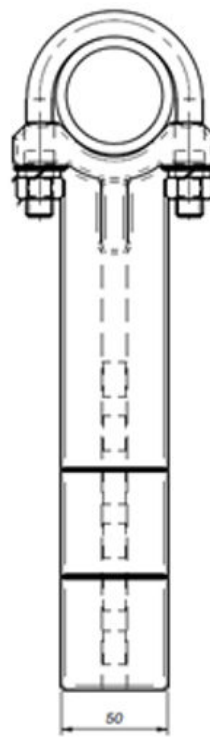
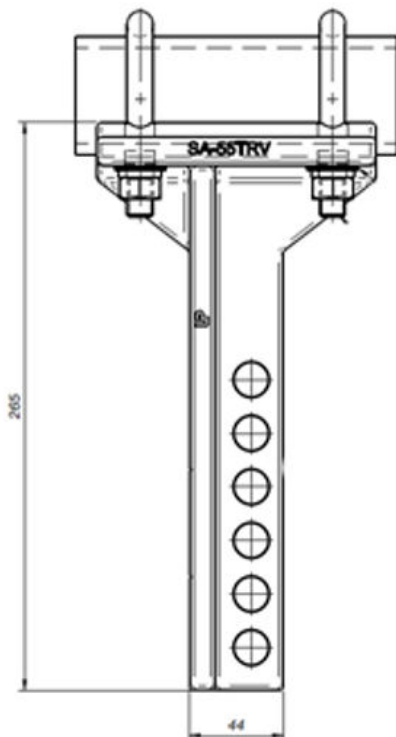
- 55 Ø Tube
- Brace Arm Support

Material

- AISi7Mg0, 6 T6 (UNE-EN 1706)



Part Number	BW Reference	Tube Ø (mm)
ASM.SA-55TRV	M45378-01-A	55



Brace Arm Support

Application

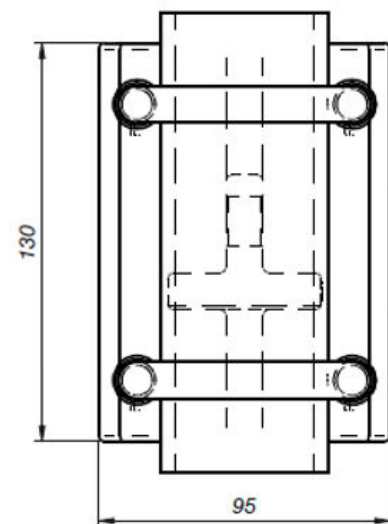
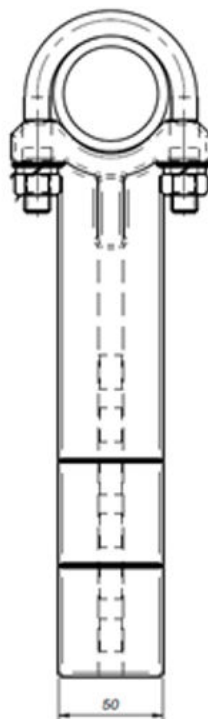
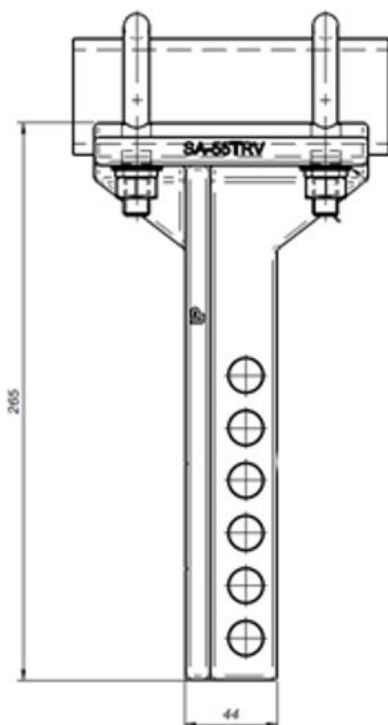
- 60 Ø Tube
- Brace Arm Support

Material

- AISi7Mg0, 6 T6 (UNE-EN 1706)



Part Number	BW Reference	Tube Ø (mm)
ASM.SA-60TRV	M45378-02-A	60



Catenary Support Assembly

Application

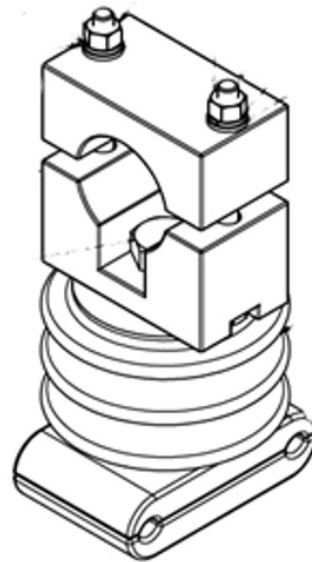
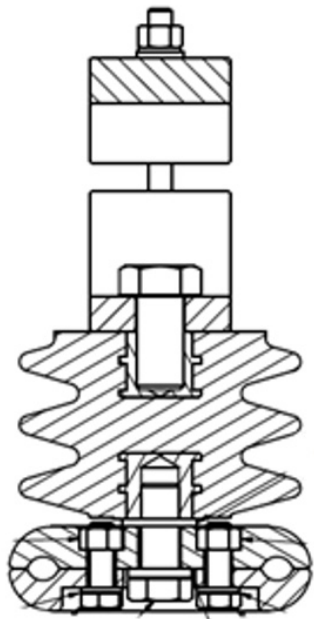
- Twin messenger wire support assembly.

Material

- GRP Polyester, Stainless steel, Aluminium and Copper



Part Number	BW Reference	Ø (mm)
RCS-24-A-10	M42230-03-A	60
RCS-24-A-25	M42230-050	42



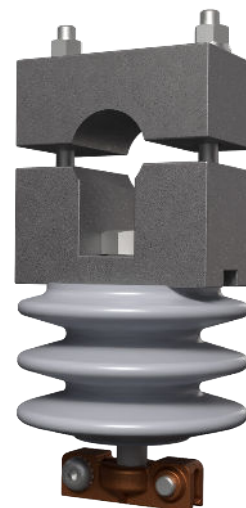
Contact Wire Support

Application

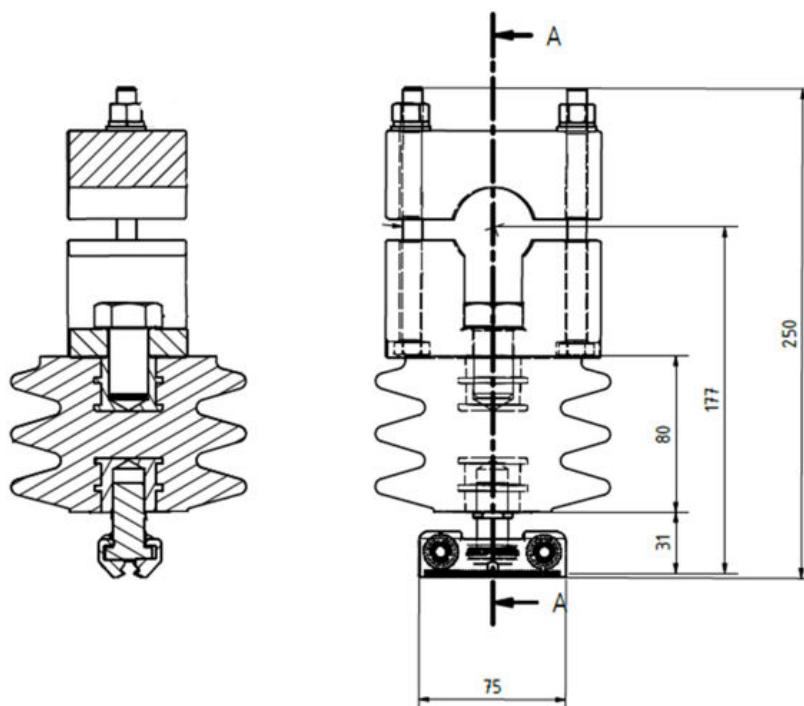
- The support and electrical insulation of single catenary contact wire.

Material

- GRP Polyester, Stainless steel, Aluminium and Copper



Part Number	BW Reference	Ø (mm)	Weight (kg)
RCS-25-A-032	M42230-07-A	42	3.301



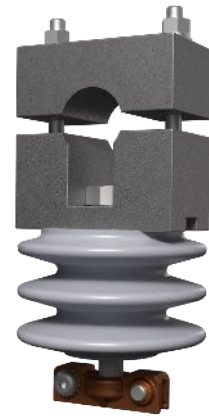
Contact Wire Support

Application

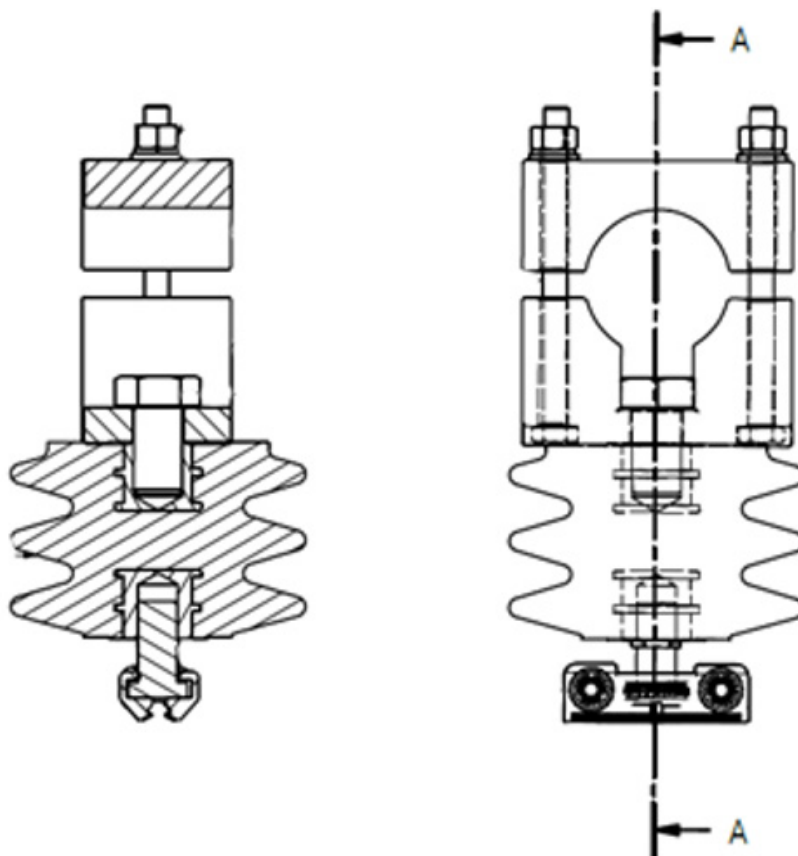
- The support and electrical insulation of single catenary contact wire.

Material

- GRP Polyester, Stainless steel, Aluminium and Copper



Part Number	BW Reference	Ø (mm)	Weight (kg)
RCS-25-A-033	M42230-09-A	60	3.148



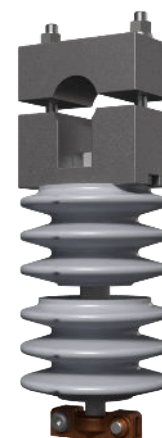
Depot Contact Wire Support

Application

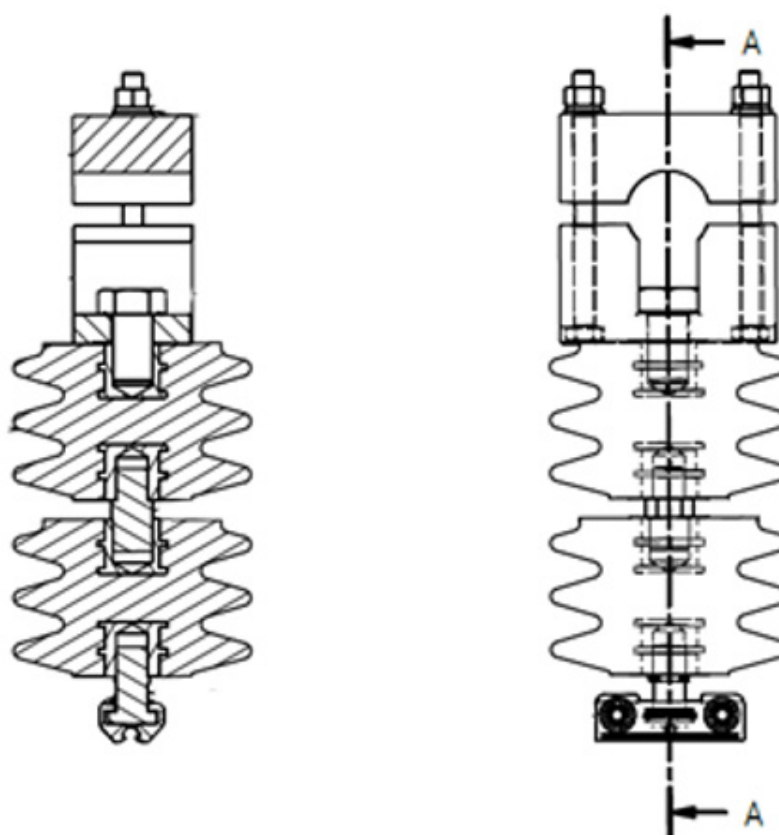
- The support and electrical insulation of single catenary contact wire.

Material

- GRP Polyester, Stainless steel, Aluminium and Copper



Part Number	BW Reference	Ø (mm)	Weight (kg)
RCS-25-A-033	M42230-11-A	42	4.568



10 mm Chain Link

Application

- 10 mm Chain Link

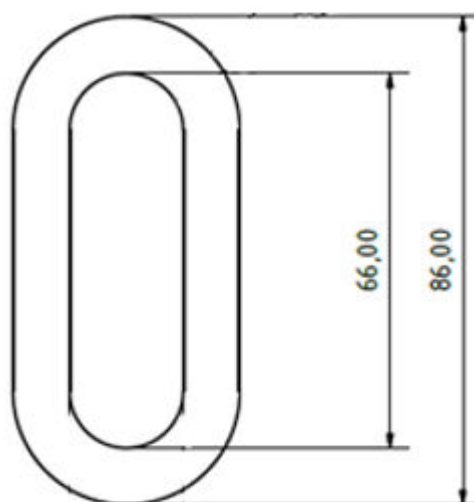
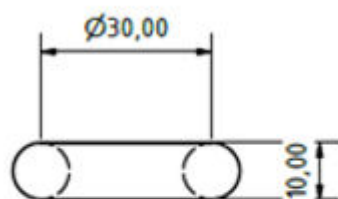
Material

- Stainless Steel



Part Number	BW Reference
-------------	--------------

244 002 209	M45342-01-A
-------------	-------------



8 mm Quick Link

Application

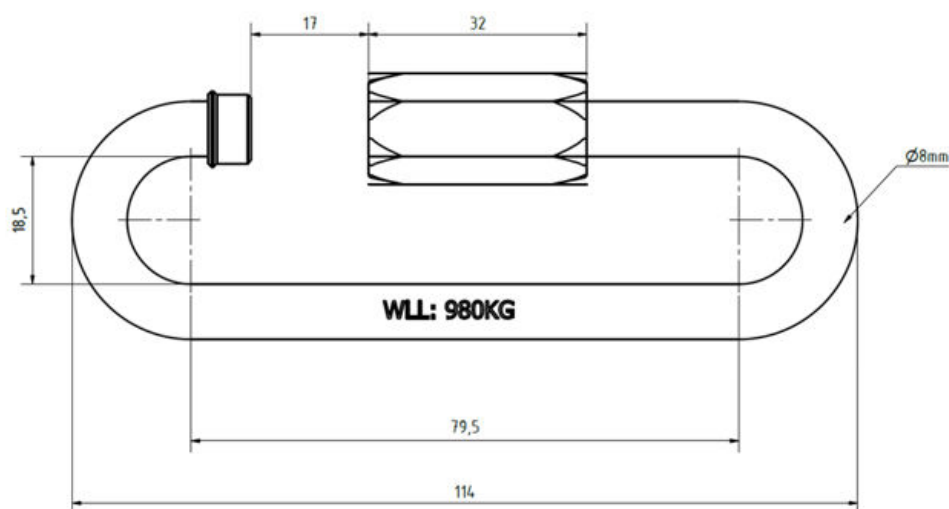
- Used as a connecting link for a rope or chain.

Material

- Stainless Steel: AISI 316 L



Part Number	BW Reference	Diameter (mm)	Max. Working Load (kg)	Weight (kg)
244 002 203	M41211-01-D	8	980	0.122



8 mm Quick Link

Application

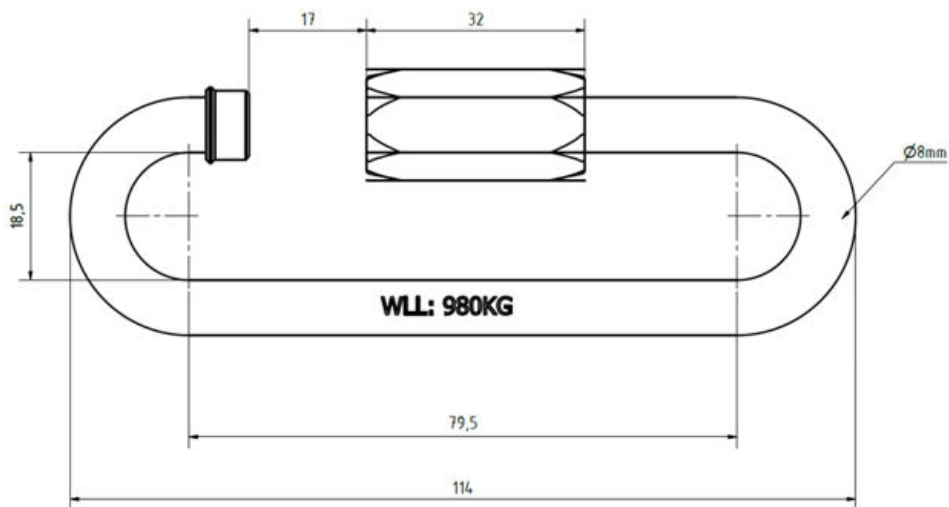
- Used as a connecting link for a rope or chain.

Material

- Stainless Steel: AISI 316 L



Part Number	BW Reference	Diameter (mm)	Max. Working Load (kg)	Weight (kg)
244 002 203	M41211-01-D	8	980	0.122



10 mm Quick Link

Application

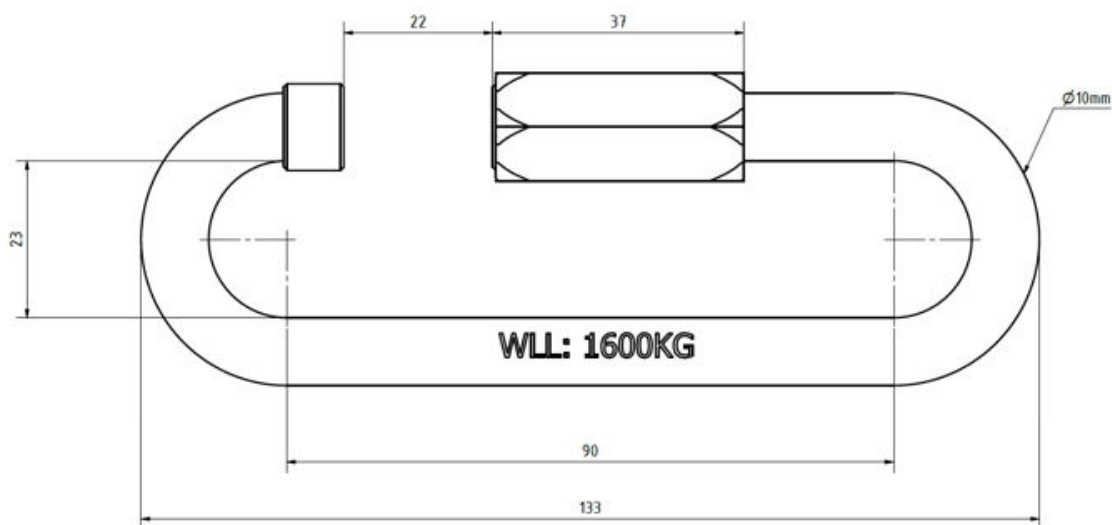
- Used as a connecting link for a rope or chain.

Material

- Stainless Steel: AISI 316 L



Part Number	BW Reference	Diameter (mm)	Routine Test Load (RTL) (Kv)	Weight (Kg)
244 002 204	M41210-01-D	10	1600	0.211



10 mm Delta Quick Link

Application

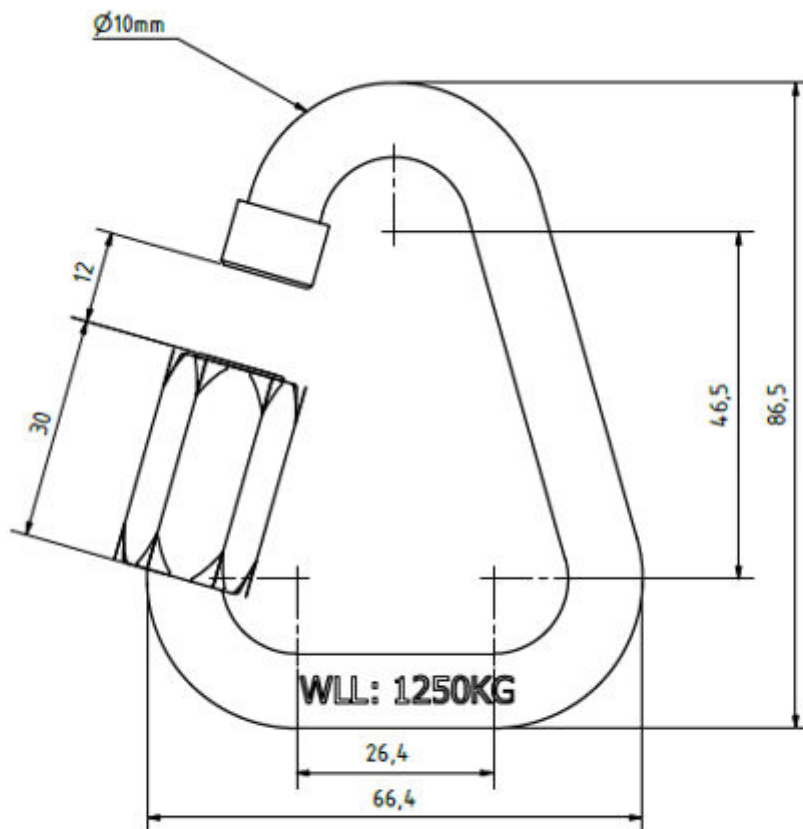
- Used as a connecting link for a rope or chain.

Material

- Stainless Steel: AISI 316 L



Part Number	BW Reference	Diameter (mm)	Max Working Load (kN)	Weight (Kg)
244 002 204	M42042-01-D	Delta Quick Link 10 mm 316 Stainless Steel	24.5	0.16





Eye Clamp

Application

- To be used on the rotational joint between strut and cantilever tubes

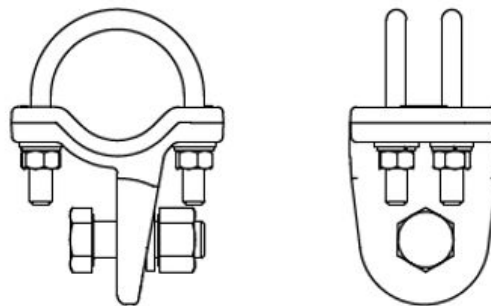
Material

- Forged Main Component: EN AW-6082 (T6)
- Bolting: Stainless Steel (A2-70 AISI 304 / A4-70 6082 / A4-70 AISI 316)

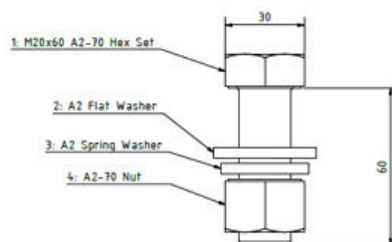
Notes

- RCS-24-A-028 (M20X60 A2-70 bolt, Flat Washer, Spring Washer and nut) to be ordered SEPERATLEY.
- Order both clamp and M20 connecting bolt. Depending on the application E.g.

Part Number	BW Reference	Tube Diameter (mm)	Max. Service Load (kN)	U-Bolt (mm)	Tightening Torque (Nm)	Weight (Kg)
000701290-00	-	60 - 70	10.7	M12	35	1.00
000701290-01	-	42 - 55	10.7	M12	35	1.00



1 X 000701290-00 + 1 X RCS-24-A-028



RCS-24-A-028

Eye Clamp

Application

- To be used on the rotational joint between strut and cantilever tubes

Material

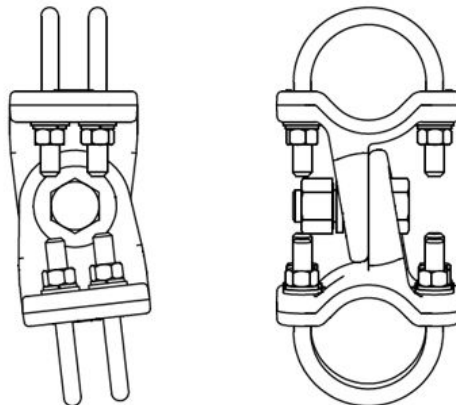
- Forged Main Component: EN AW-6082 (T6)
- Bolting: Stainless Steel (A2-70 AISI 304 / A4-70 6082 / A4-70 AISI 316)

Notes

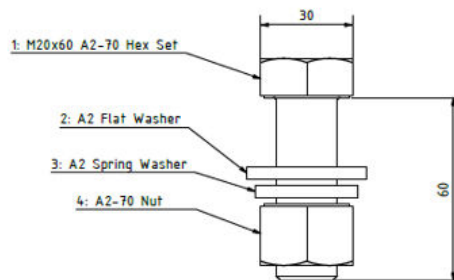
- RCS-24-A-028 (M20X60 A2-70 bolt, Flat Washer, Spring Washer and nut) to be ordered SEPERATLEY.
- Order both clamp and M20 connecting bolt. Depending on the application E.g.



Part Number	BW Reference	Tube Diameter (mm)	Max. Service Load (kN)	U-Bolt (mm)	Tightening Torque (Nm)	Weight (Kg)
000701290-00	-	60 - 70	10.7	M12	35	1.00
000701290-01	-	42 - 55	10.7	M12	35	1.00



2 X 000701290-00 + 1 X RCS-24-A-028



RCS-24-A-028

Hook Clamp

Application

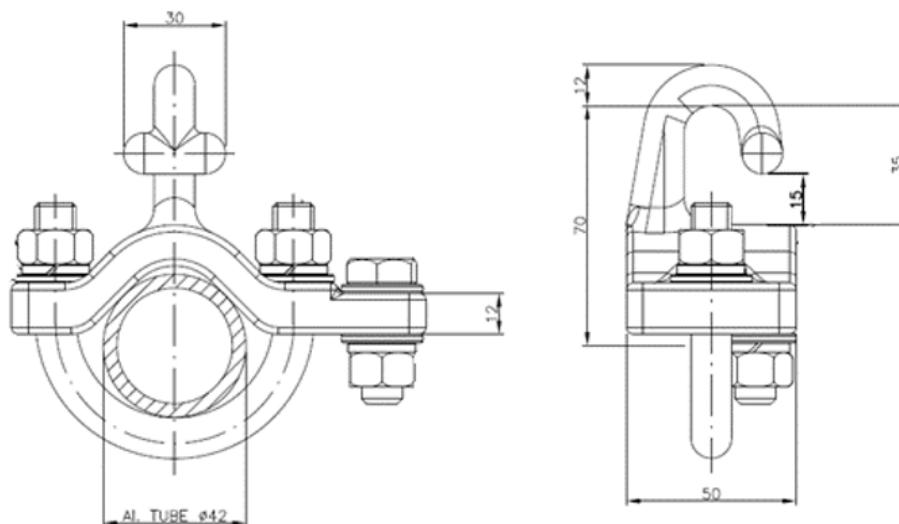
- Used for attaching the cantilever dropper to the registration tube

Material

- Main Casted Part: EN-AC 42200 – AlSi7Mg 0.6 (T6) – EN 1706
- Bolting: Stainless Steel (A2-70 AISI 304 / A4- 70 AISI 316)



Part Number	BW Reference	Tube Diameter (mm)	Dimension (mm)	Tightening Torque M12 (Nm)	Weight (Kg)
234 006 042	M45332-01-A	42	10.7	45	0.42



Polymide Cable Hanger - Parafil Rope

Application

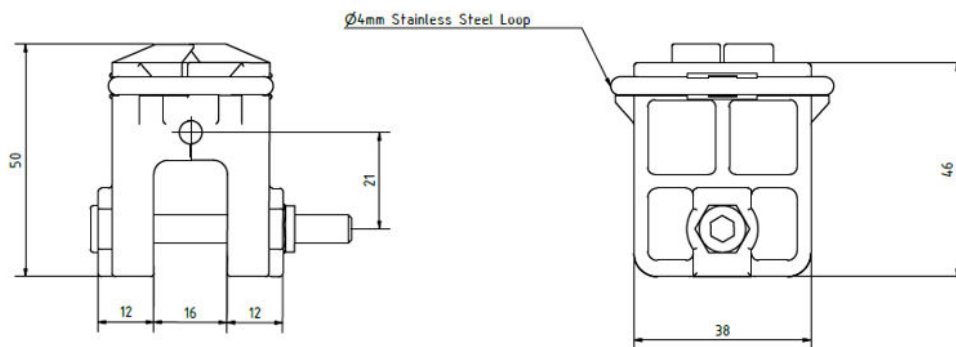
- Used for supporting parafil rope.

Material

- Body: Polymide 6
- Bolt: Stainless Steel A4
- Nut: Stainless Steel A4 – 70



Part Number	BW Reference	Description	Parafil Type A (mm)	Max Vertical Working Load (N)	Weight (kg)
244 002 202	M41224-01-D	7 mm Cabel Hanger	7	400	0.32
244 002 220	M41223-01-D	8 mm Cable Hanger	8	400	0.32



Binding Cylinder

Application

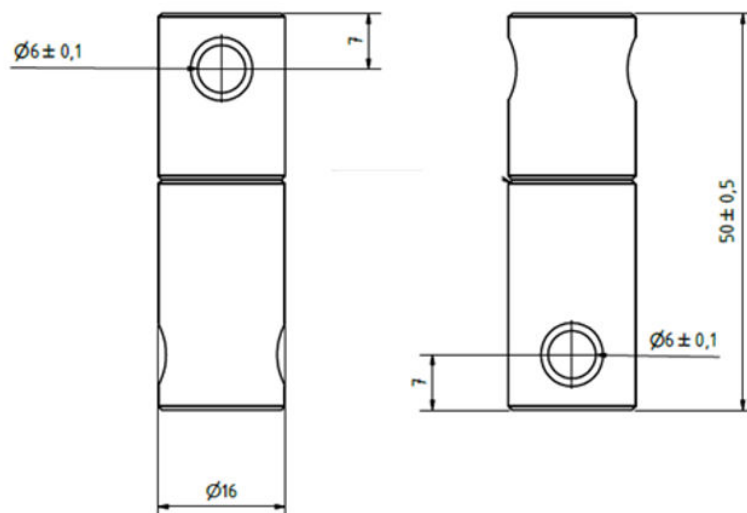
- Swivel pin connecting two parafil hangers

Material

- Stainless Steel Grade A4



Part Number	BW Reference	Weight (kg)
244 002 207	M41225-01-D	0.073



Stitch Support Assembly

Application

- Stitch support assembly.

Material

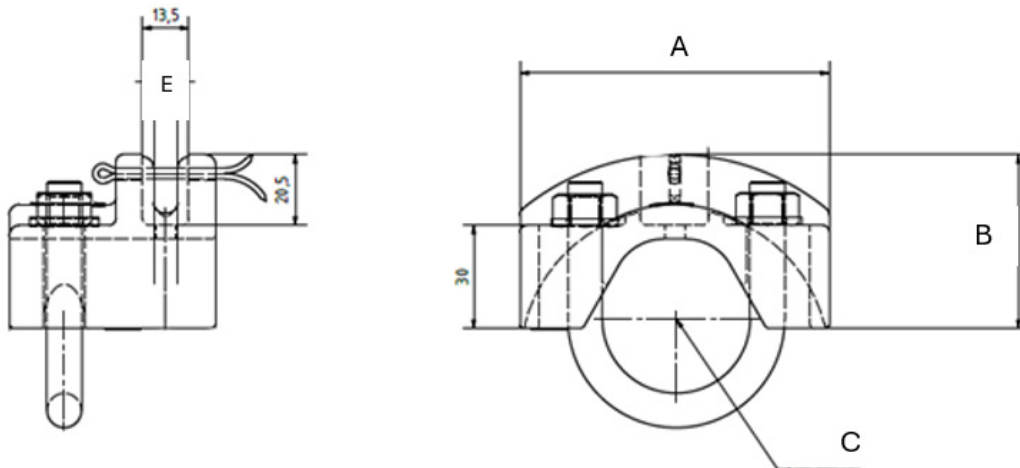
- Aluminium 6082 – T6 and Stainless Steel

Note

- U-Bolts ARE NOT range taking



Part Number	BW Reference	Diameter (Ø)	A (mm)	B (mm)	C (mm)	E (mm)
RCS-25-P-037-1	M41225-01-D	42	90	50.5	42	7
RCS-25-P-037-2	-	55	90	24.5	55	7



Stitch Support Assembly

Application

- Stitch support assembly.

Material

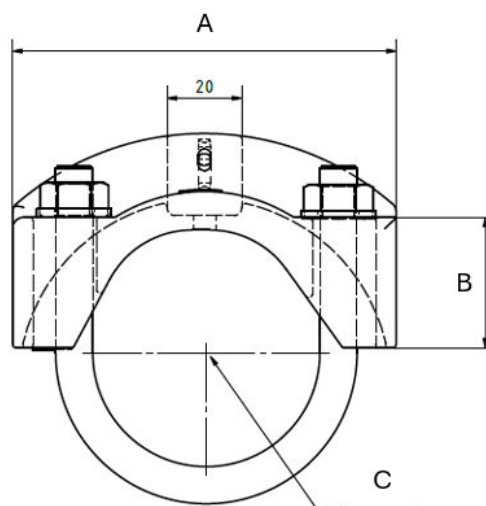
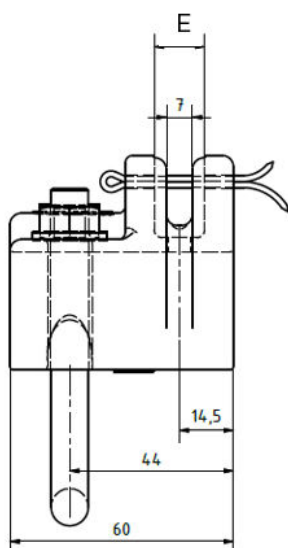
- Aluminium 6082 – T6 and Stainless Steel

Note

- U-Bolts ARE NOT range taking



Part Number	BW Reference	Diameter (Ø)	A (mm)	B (mm)	C (mm)	E (mm)
RCS-25-P-038-1	M4342-02-A	60	103	35	60	7
RCS-25-P-038-2	-	70	103	35	70	7



Registration Arm Assembly

Application

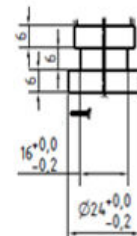
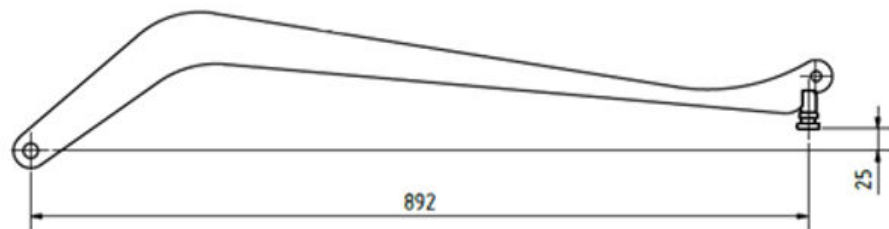
- Strong registration

Material

- Finish: hot dipped galvanize to BS EN ISO 1461
- Registration Arm Profile: Steel S275
- Connection Pin: Stainless Steel 306



Part Number	BW Reference	Diameter (Ø)
244 004 018	-	12



Registration Arm Assembly

Application

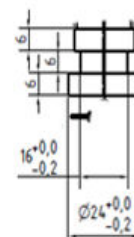
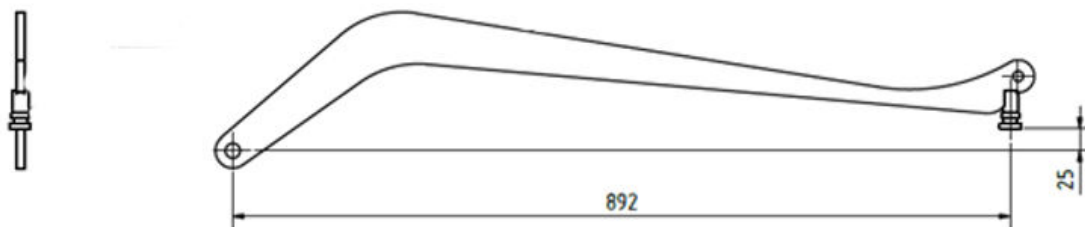
- Strong registration

Material

- Finish: hot dipped galvanize to BS EN ISO 1461
- Registration Arm Profile: Steel S275
- Connection Pin: Stainless Steel 306



Part Number	BW Reference	Diameter (Ø)
245 004 018	M45335-03-A	14



Insulated Registration Arm Assembly

Application

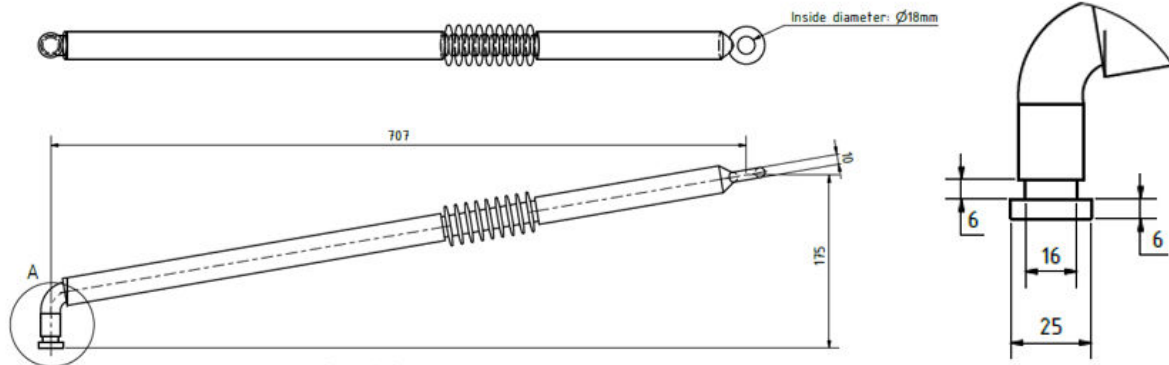
- Insulated steady arm

Material

- Polymetric Housing: Injection moulded silicone (RAL 7040)
- Composite core: Pultruded ECR-Glass Fibre & Epoxy Resin (Ø 20mm core)
- Fittings: Steel, Hot Dipped Galvanised per ISO 1461 (Min Ave 85µm)



Part Number	BW Reference	One Minute Power Frequency withstand Voltage (kV)	Lightening Impulse withstand Voltage (kV)	Minimum Arcing Distance(mm)	Minimum Creepage (mm)
RCS-24-P-791	M45334-01-D	15	65	100	220



Insulated Registration Arm Assembly

Application

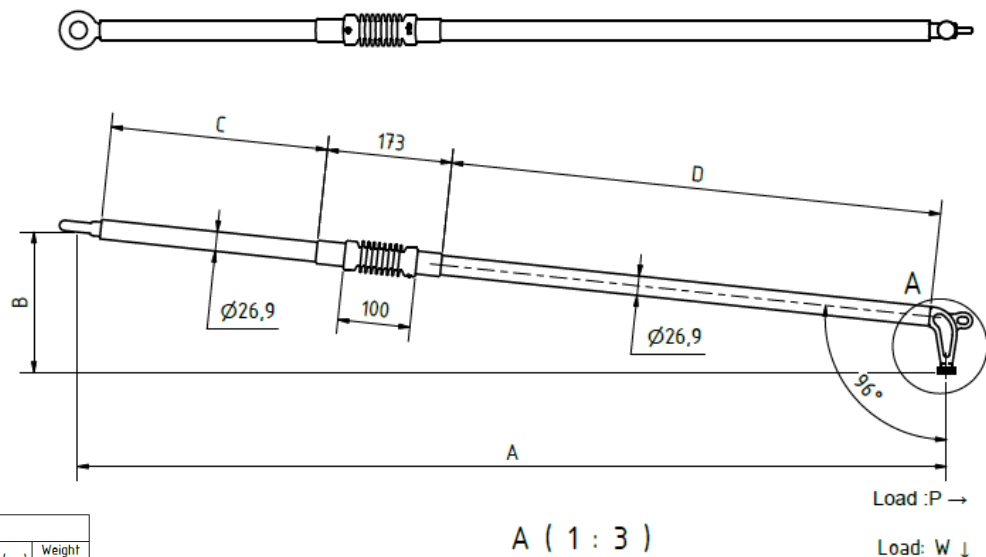
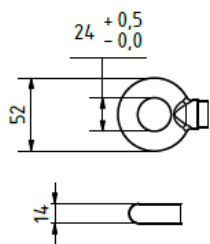
- Insulated steady arm

Material

- Polymeric Housing: Injection Moulded HTV Silicone Rubber with ATH Filler (Grey, min. 3mm)
- Composite Core: Pultruded ECR-Glass Fibre & Epoxy Resin (Ø20mm Rod)
- End Fitting Steel: Hot Dip Galv. in acc. to EN ISO 1461 (min. ave. 85µm thk)



Part Number	One Minute Power Frequency withstand Voltage (kV)	Lightening Impulse withstand Voltage (kV)	Minimum Arcing Distance(mm)	Minimum Creepage (mm)	Maximum Working Load (P) (kN)	Maximum Working Load (W) (kN)	Number of Sheds	Weight (kg)
801052001-00900	15	65	95	220	5.3	1.2	8	2.6
801052001-01100								2.9
801052001-01200								3.2
801052001-01300								3.3
801052001-01400								3.5
801052001-00900								4.3



Part no	A ±4 (mm)	B (mm)	C (mm)	D (mm)	Weight (kg)
801052001-00900	900	163	300	378	2.6
801052001-01100	1100	184	300	579	2.9
801052001-01200	1200	195	300	679	3.2
801052001-01300	1300	205	300	780	3.3
801052001-01400	1400	216	300	880	3.5
801052001-01800	1800	258	300	1280	4.3

Thimble and Ferrule

Application

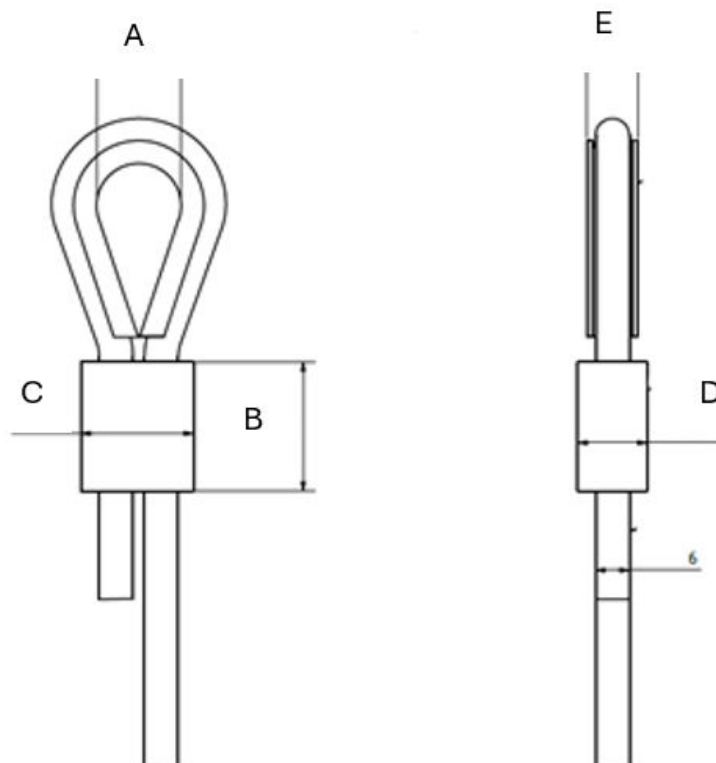
- Supporting rope.

Material

- Stainless Steel Thimble
- Copper Ferrule EN 13411
- Stainless Steel Rope (Supplied Separately)

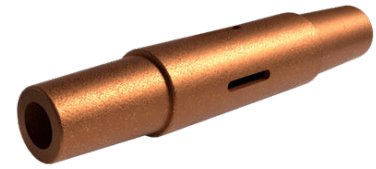


Part Number	BW Reference	Description	Wire Rope Ø (mm)	Max Service Load (kN)	A	B	C	D Ø	E
RCS-24-A-035	-	6mm Stainless Steel and Thimble and Copper Ferrule Set	6	8	15	23	20	12.3	9
RCS-24-P-026	THSS6	6 mm Stainless Steel Thimble	Thimble and Ferrule can be ordered as a kit (RCS-24-A-035)						
RCS-24-P-027	TCU6.5	6.5 mm Copper Ferrule	Thimble and Ferrule can be ordered separately for spares.						
RCS-24-A-036	-	8 mm Stainless Steel Thimble and Copper Ferrule Set	8	14.25	18	32	27	17.2	12
RCS-24-P-028	THSS8	8 mm Stainless Steel Thimble	Thimble and Ferrule can be ordered as a kit (RCS-24-A-036)						
RCS-24-P-029	TCU6	9 mm Copper Ferrule	Thimble and Ferrule can be ordered separately for spares.						



CLAMPS

Conical Coupling CuNiSi



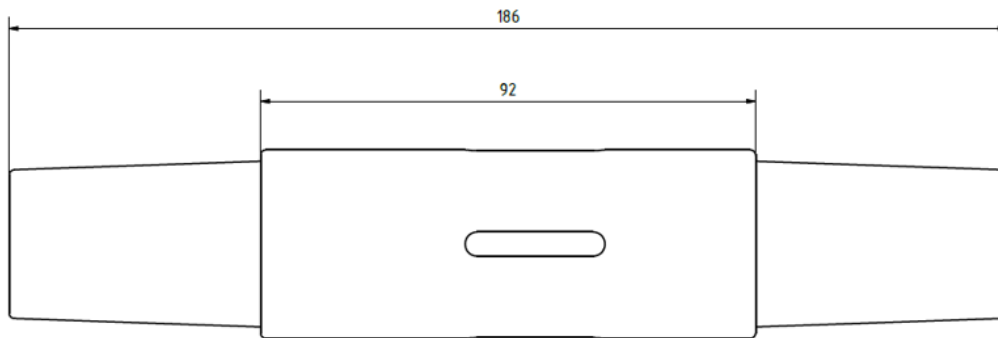
Application

- Tensioned and current-proofed Cu, Cu-Steel, Steel or Bz cables.

Material

- Body - CuNiSi
- Collet – AlBz
- Spring – Stainless Steel

Part Number	BW Reference	Description	Breaking Load (kN)	Conductor Diameter (mm)	Service Load (kN)		Conductor Cross Section	Weight (Kg)
					Min	Max		
RCS-25-P-058	-	Conical Coupler	50	120	3	25	120 mm ²	0.612



Connection Clamp GPF - 70/150 M 1



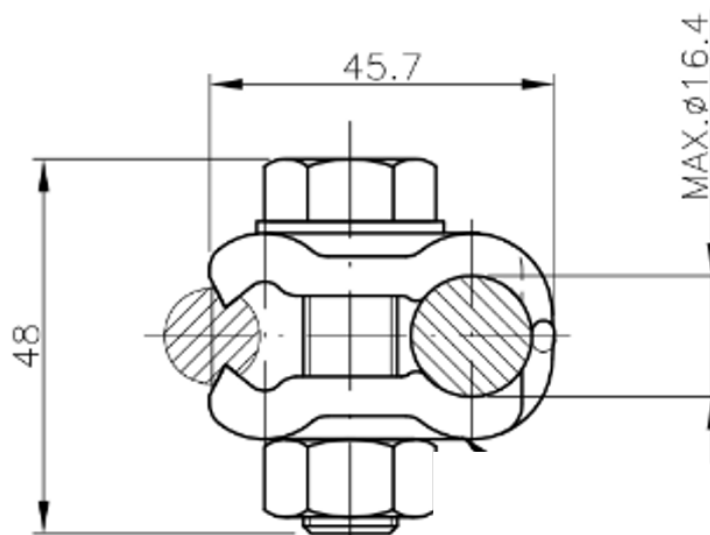
Application

- Wires connection.
- Z-Wire
- Midpoint
- This clamp is used to anchor the Z-Wire to the messenger wire for midpoint.
- Bolted feeding jumpers as an alternative to compression assemblies.

Material

- Forged parts: CuNi2Si (CW111C) (EN12165)
- Screw: St. Steel (A2) (EN ISO 3506)
- Nuts: St. Steel (A2) (EN ISO 3506)
- Washer: St. Steel (A2) (EN ISO 3506)

Part Number	BW Reference	Contact Wire	Branch Wire Cross Section (mm ²)	Tightening Torque M12 (Nm)
325 102 003	M42517-01-D	AC/BC 80 - 150	Cu 70 - 150F	65



Single Contact Wire Clamp 80 - 150 mm

Application

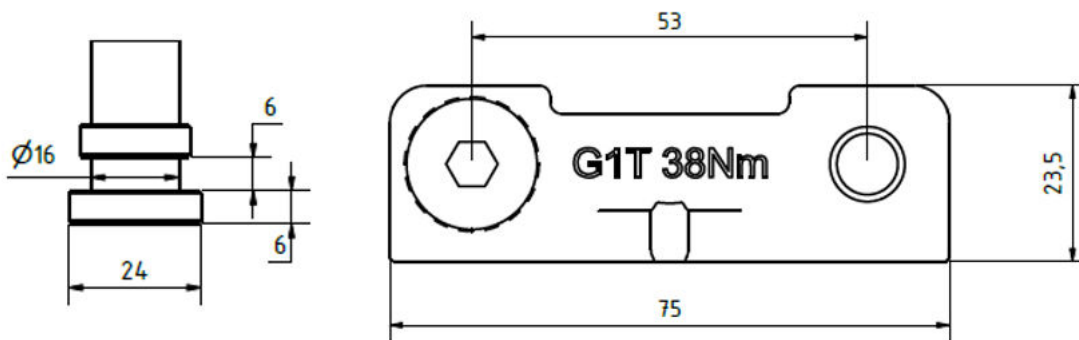
- Connection of contact wire to registration arm allowing for rotation.
- Used for cantilevers with forged and casted components.

Material

- Body: CuNi2Si (UNE EN-12165)
- External Tooth Star Washers: Stainless Steel (A2)
- Button Head Cap Screws : Stainless Steel (A2-80)



Part Number	BW Reference	Screw	Contact	Tightening Torque M10	Weight (kg)
304 741 001	M42543-01-D	Hex	AC/BC 80-150	38	0.21



Twin Contact Wire Clamp

Application

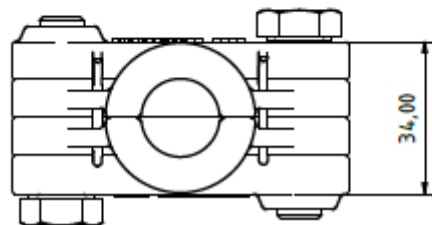
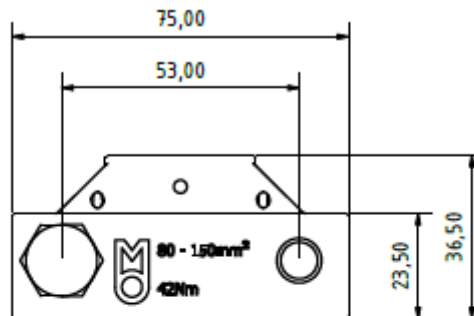
- Twin Contact Wire Clamp 80-150mm²

Material

- 1: Body - Outer: CuNi2Si (UNE EN-12165)
- 2: Body - Inner: CuNi2Si (UNE EN-12165)
- 3: External Tooth Star Washers: (Stainless Steel (A2))
- 4: Button Head Cap Screws: Stainless Steel (A2-80)



Part Number	BW Reference	Screw	Contact	Tightening Torque M10	Weight (kg)
RCS-24-P-020	M46395-01-A	Hex	AC/BC 80-150	42	0.41



Deltram Nipple

Application

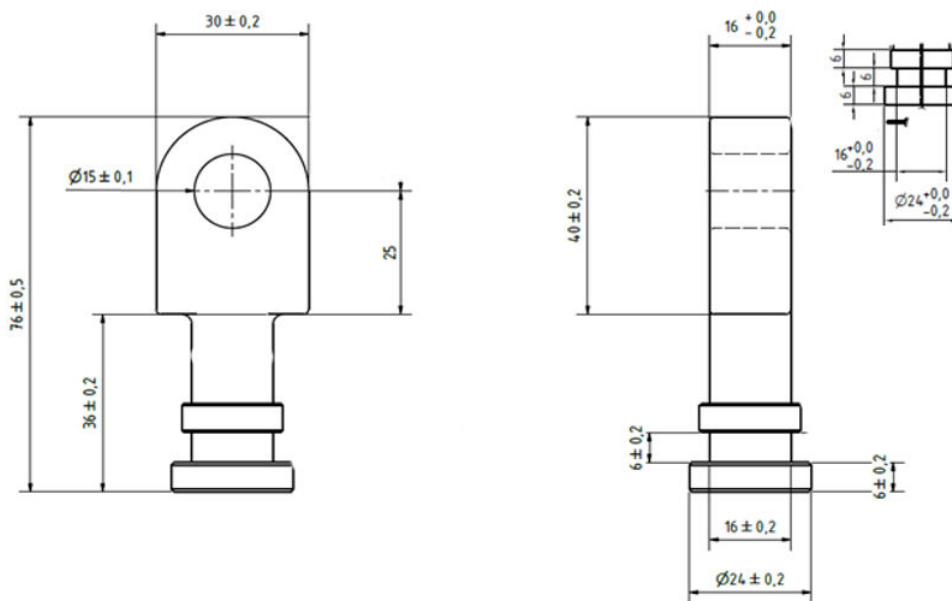
- Deltram Nipple - For Insulated Stitch Assemblies without Levers

Material

- Stainless Steel



Part Number	BW Reference	Weight (kg)
244 004 020	M45073-01-D	0.193



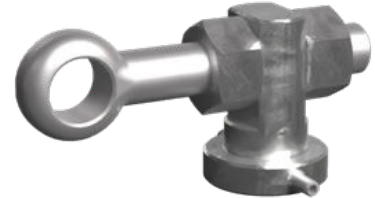
Stitch Lever Assembly

Application

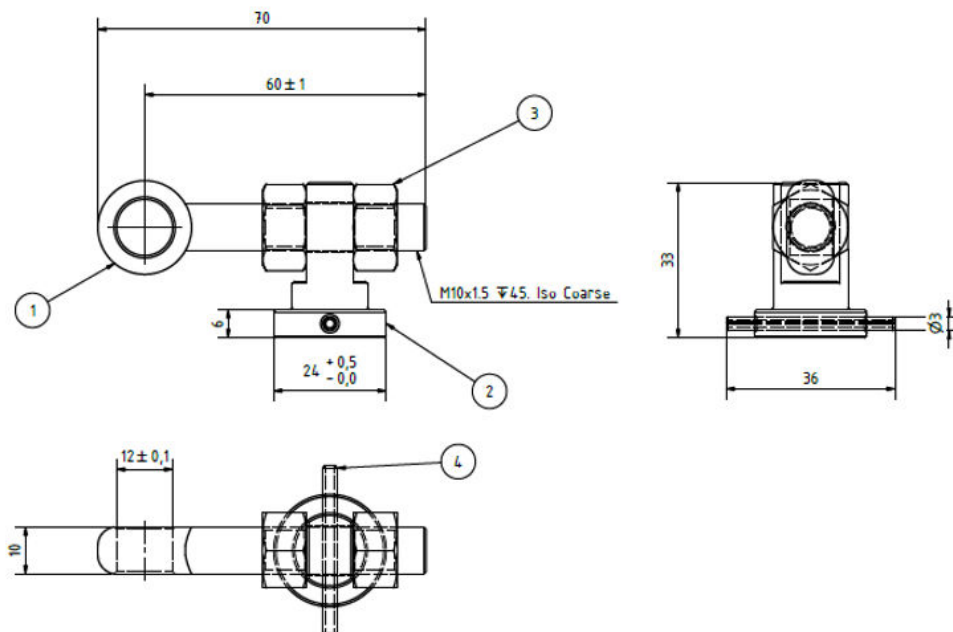
- Deltram Nipple - For Insulated Stitch Assemblies without Levers

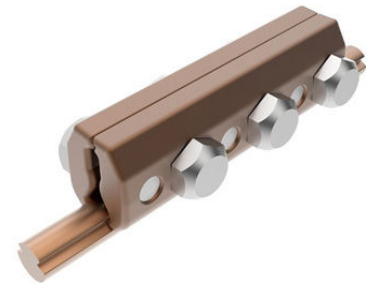
Material

- Stainless Steel



Part Number	BW Reference	Weight (kg)
RCS-25-A-081	-	0.118
Part List		
Item	Qty	Description
1	1	M10 – Ø12 Eye Bolt – 45 mm Thread
2	1	Deltram Nipple – Levers
3	2	M10 A2 – 70 Hex Nut
4	1	Spring – Type Straight Pin – A2





Wire Clamp

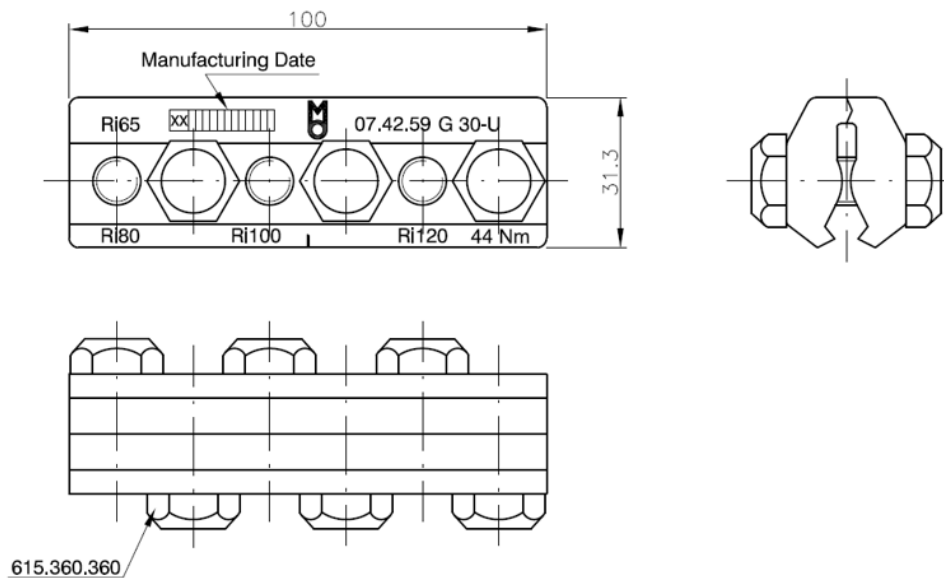
Application

- Electrical and mechanical connection
- Traction wire splice
- This clamp is used to connect grooved overhead contact wires with full tension.

Material

- Forged Parts: CuNi2Si (UNE-EN 12165)
- Screw: St. Steel (A2 (EN ISO 3506))

Part Number	BW Reference	Contact Wire	Tightening Torque M10 (Nm)	Weight (kg)
302 537 537	M42543-01-D	AC/BC 80 - 120	44	0.5



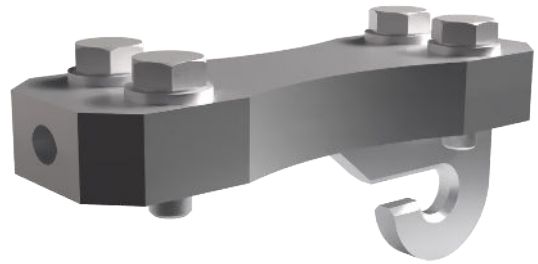
Snail Clamp

Application

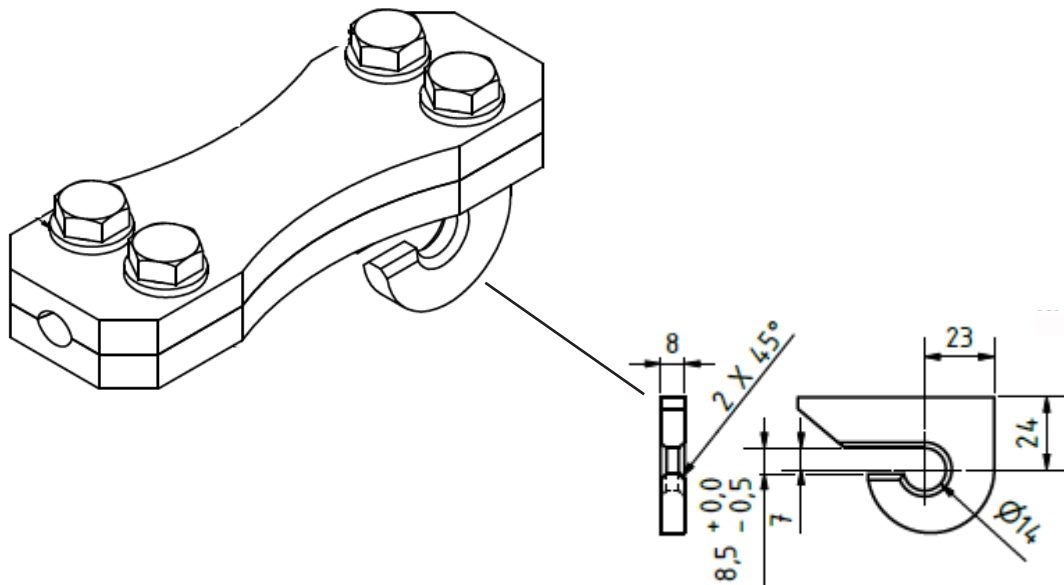
- Wire Horizontal Snail Clamp - Hook - Assy

Material

- 10mm Stainless Steel AISI 304



Part Number	BW Reference	Diameter Ø
RCS-25-A-003	M47370-01-A	6
RCS-25-A-005	M47370-03-A	8



Snail Clamp

Application

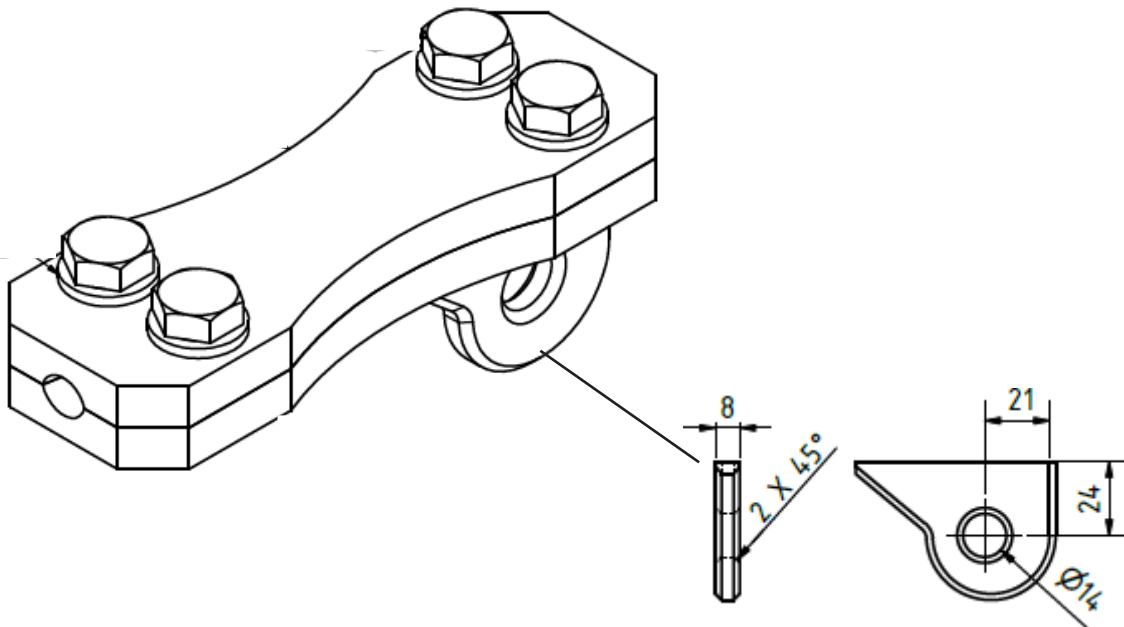
- Wire Horizontal Snail Clamp - Ring - Assy

Material

- 10mm Stainless Steel AISI 304



Part Number	BW Reference	Diameter Ø
RCS-25-A-004	M47370-02-A	6
RCS-25-A-006	M47370-02-A	8



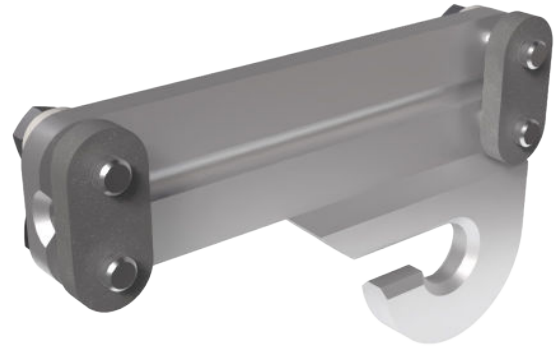
Snail Clamp

Application

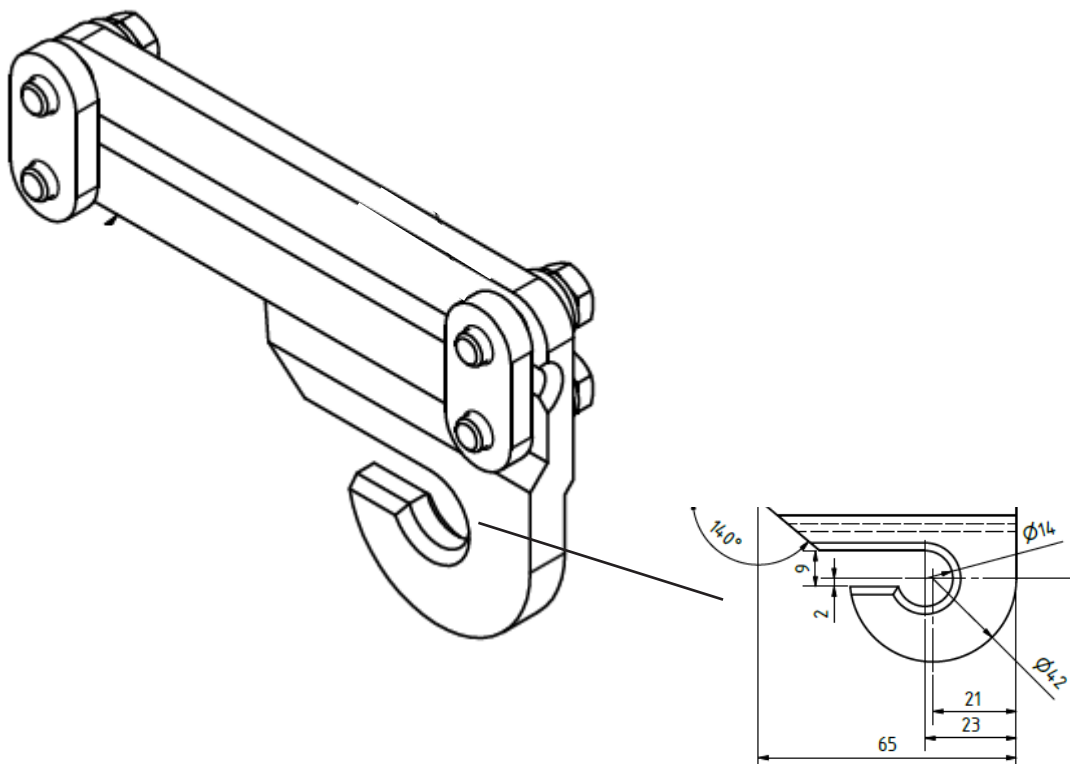
- Wire Vertical Snail Clamp - Hook Assy

Material

- 10mm Stainless Steel AISI 304



Part Number	BW Reference	Diameter Ø
RCS-25-A-007	M47370-01-A	6
RCS-25-A-009	M47370-03-A	8



Snail Clamp

Application

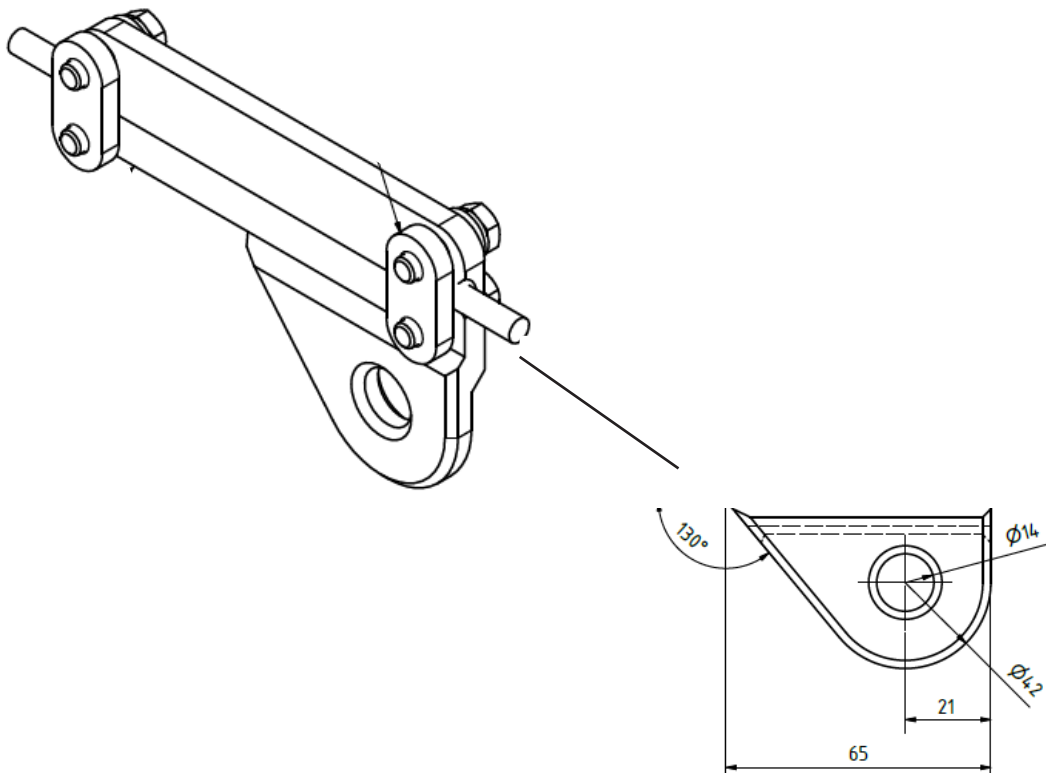
- Wire Vertical Snail Clamp - Ring - Assy

Material

- 10mm Stainless Steel AISI 304



Part Number	BW Reference	Diameter Ø
RCS-25-A-008	M47370-02-A	6
RCS-25-A-010	M47370-01-A	8



DROPPERS

Dropper Assemblies

Application

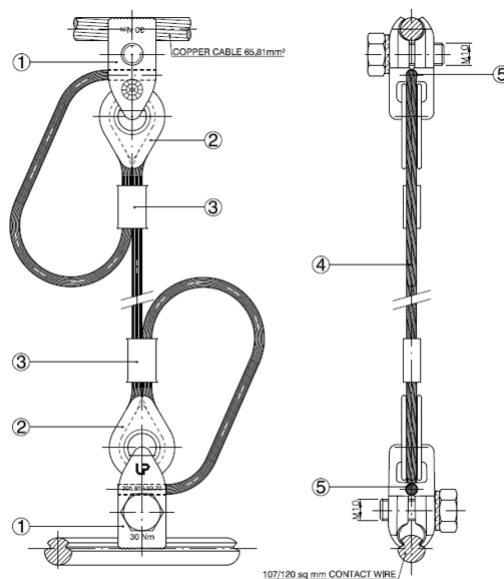
- Used for full current carrying suspension/ connection from / to the contact wire on the messenger wire.
- Can be supplied as a full assembly.

Material

- See table.



PADS No.	UKMS	Part Number	No.	Description	Qty.	Reference	Material	UNE
0091/000153	C99/F01/003	PE.HC 107/CU70.10 V2	1	Hanger Clamp 1 C.W	2	305.859.50.70	CuNi2Si	EN 12165
			2	Thimble Nylon	2	625.012.P10	Nylon	N/A
			3	Compression Sleeve	2	625.012.41	Cu - ETP	EN 13600
			4	Bz Cable 10 sq mm	1	N/A	N/A	N/A
			5	Compression Sleeve	2	OC.10.1	Cu - ETP	EN 13600



Copper Lug

Application

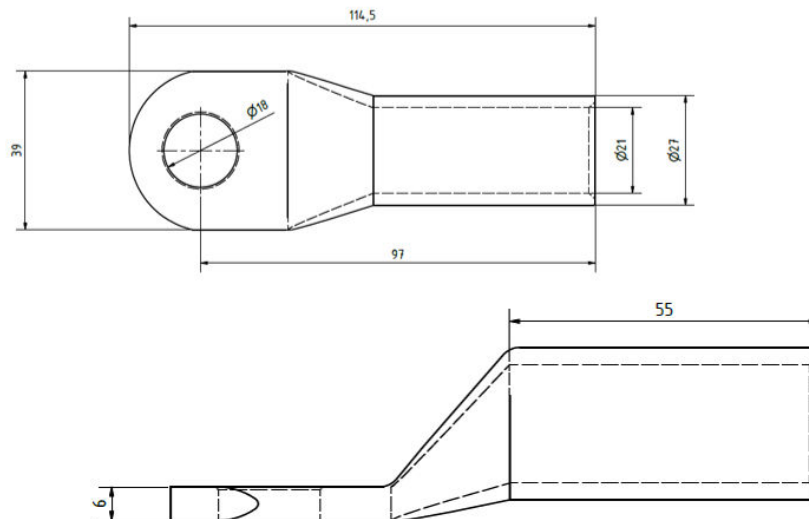
- Conductor termination

Material

- Tinned Copper



Part Number	BW Reference	Description	Material Electrolytic Copper	Surface Treatment	Minimum Operating Temperature	Maximum Operating Temperature	Maximum Operating Voltage	Weight (kg)
RCS-24-P-860	A 30-M 16	Copper Lug 240 sq mm	44	0.5	- 50 °C	+ 150 °C	35 kV	0.194



Cable Lugs

Application

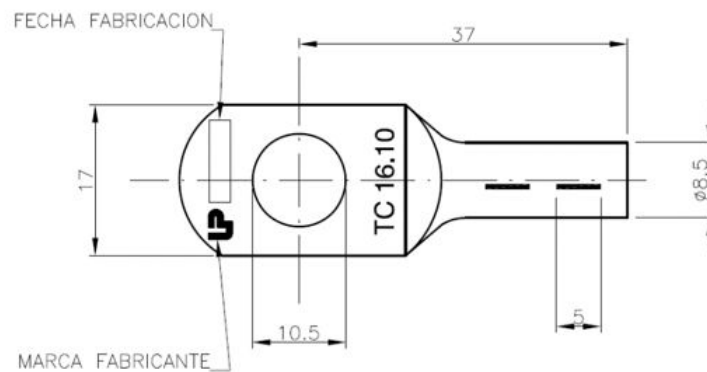
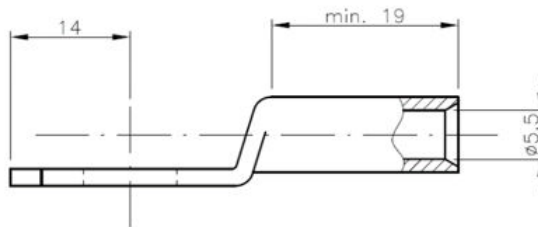
- Used on dropper equipotential loops.

Material

- Cu-ETP (EN12165)



Part Number	BW Reference	Compression Die	Wire Section (mm ²)
TC.16.10SE	-	300.353.356	10 - 12
TC.25.10SE	-	300.353.358	16 - 25



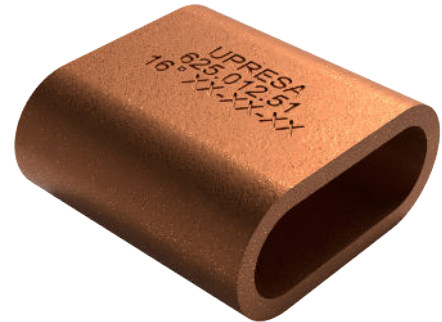
Compression Sleeve

Application

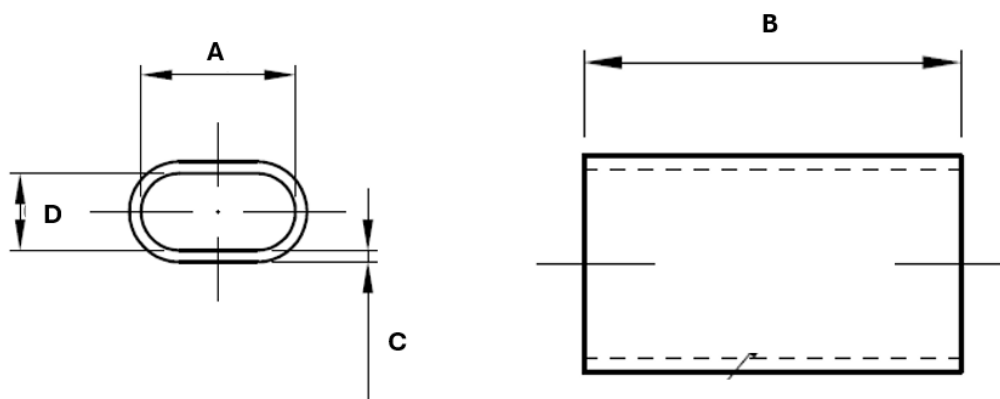
- This part is used for protecting the wire from wearing.

Material

- Cu-ETP (EN12165)



Part Number	BW Reference	A	B	C	D	Compression Die	Wire Section (mm ²)
625.012.41	-	10	20	0.75	5	HG.10.PO.8	10F
625.012.M3V	-	-	-	-	-	HG.15.PO.8	12F
625.012.51	-	17.5	20	1.50	10	HG.16.PO.11	16F
625.012.61	-	-	-	-	-	HG.17.PO.11	25F



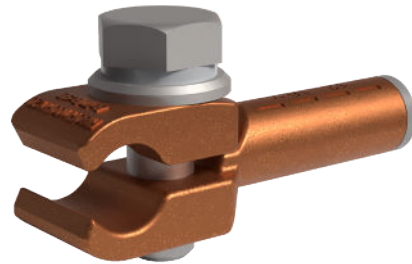
Cold Forged Crimped Dropper Clamp

Application

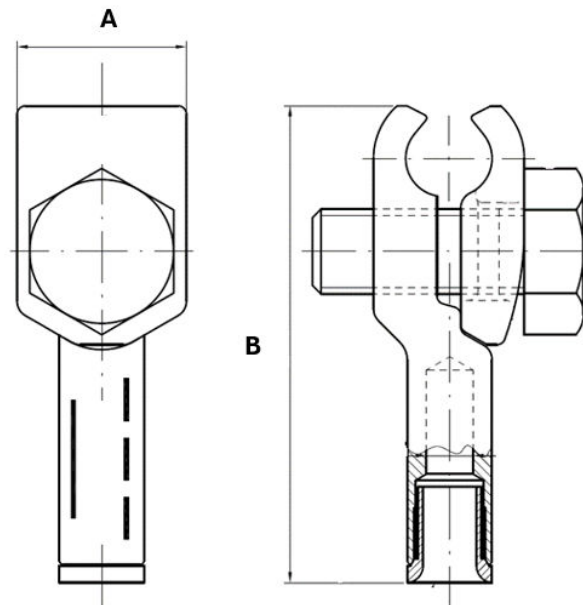
- Used on droppers on both ends crimped.

Material

- Hot forged parts: CuNi2Si (UNE-EN 13599)
- Screw: St. Steel (A2/A4) (EN ISO 3506)



Part Number	BW Reference	Contact Wire Section (mm ²)	Catenary Wire Section (mm ²)	Dropper Wire Cross Section (mm ²)	A (mm)	B (mm)	Tightening Torque (mm ²)	Compression Die
302.823.003	-	AC / BC 80 - 120	50	10	20	56.3	30	300.353.358
302.825.825	-	AC / BC 80 - 120	50	25	20	57	30	300.353.361
303.848.002	-	AC / BC 80 - 120	70 - 95	16	20	69	30	300.353.361



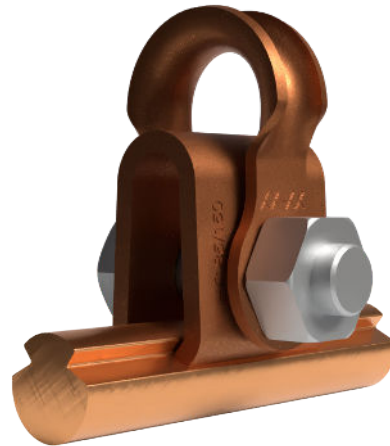
Dropper Clamp for Contact Wire

Application

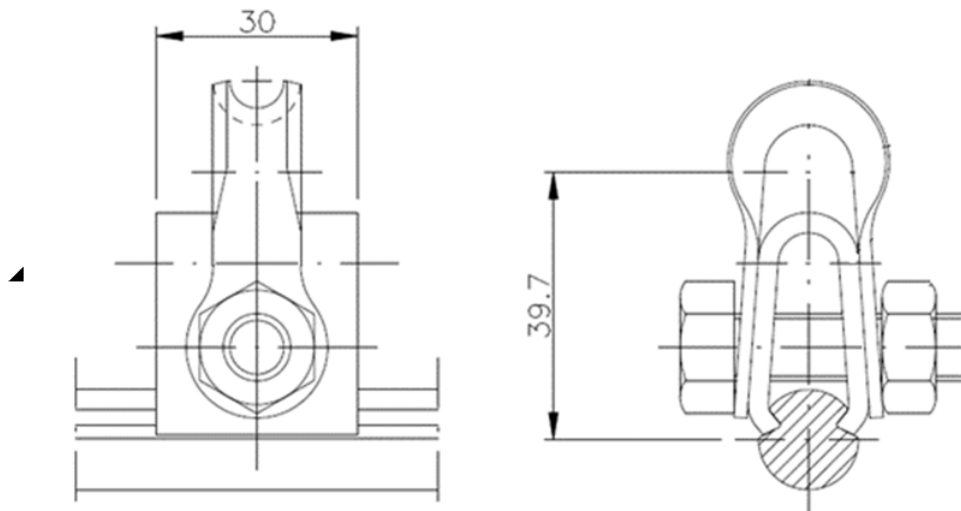
- Used to connect droppers to the contact wire.

Material

- Forged parts: CuNi2Si (UNE-EN 12165)
- Screw: St. Steel (A2/A4) (EN ISO 3506)
- Nut: St. Steel (A2/A4) (EN ISO 3506)



Part Number	BW Reference	Branch Wire Cross Section (mm ²)	Diameter (mm)	Tightening Torque (Nm)
625.012.CONJ	-	AC/BC 80-150	CuNi2Si	25



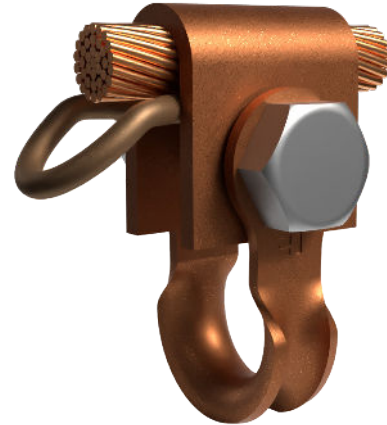
Dropper Clamp for Messenger Wire

Application

- Used to connect droppers to the catenary wire.

Material

- Forged parts: CuNi2Si (UNE-EN 12165)
- Screw: St. Steel (A2/A4) (EN ISO 3506)
- Nut: St. Steel (A2/A4) (EN ISO 3506)



Part Number	BW Reference	Wire Section (mm ²)	Diameter (mm)	Tightening Torque (Nm)
625.012.CONJ.25	-	25	CuNi2Si	25
625.012.CONJ.35	-	35	CuNi2Si	25
625.012.CONJ.70H	-	65 - 70	CuNi2Si	25
625.012.CONJ.95	-	95	CuNi2Si	25
625.012.CONJ.120	-	120	CuNi2Si	25
625.012.CONJ.150	-	150	CuNi2Si	25

Hot Forged Bolted Dropper Clamp

Application

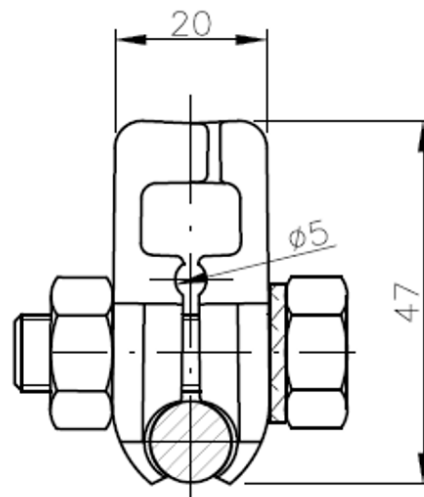
- Dropper clamps able to be installed in either contact wire or catenary wire.

Material

- Hot forged parts: CuNi2Si (EN12165)
- Screw: St. Steel (A2/A4) (EN ISO 3506)
- Washer: St. Steel (A2/A4) (EN ISO 3506)



Part Number	BW Reference	A	B	Contact Wire Section (mm ²)	Messenger Wire Section (mm ²)	Tightening Torque (mm ²)
305.859.50.70	-	20	47	AC/BC - 107 - 150	50 - 70	30
305.859.120	-	-	-	AC/BC - 107 - 150	95 - 120	30
305.859.002	-	-	-	AC/BC - 107 - 150	150 - 185	30
305.859.300	-	24	64.61	N/A	300	30



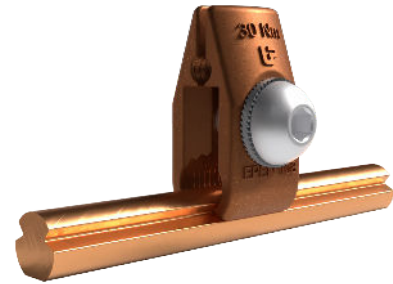
Rigid Dropper Clamp

Application

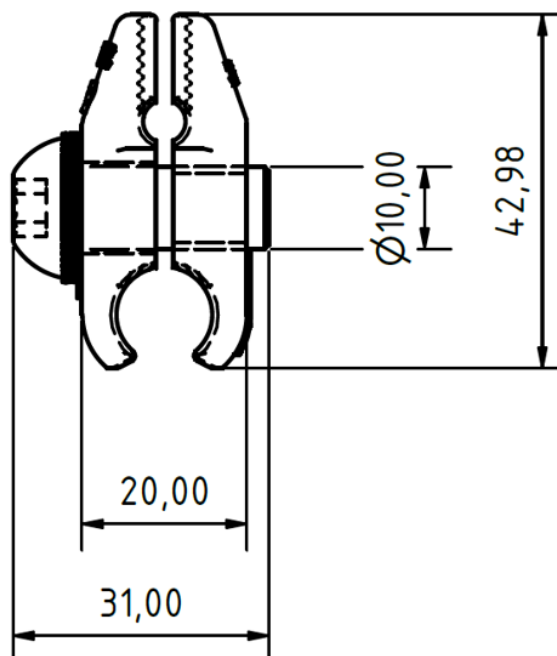
- Droppers for narrow system heights on reduced clearance locations.

Material

- Forged parts: CuNi2Si (UNE-EN 12165)
- Screw: St. Steel (A2/A4) (EN ISO 3506)
- Washer: St. Steel (A2/A4) (EN ISO 3506)



Part Number	BW Reference	Contact Wire Section (mm ²)	Tightening Torque (mm ²)
EPEN.108	-	BC 107 - 50	30



Thimble

Application

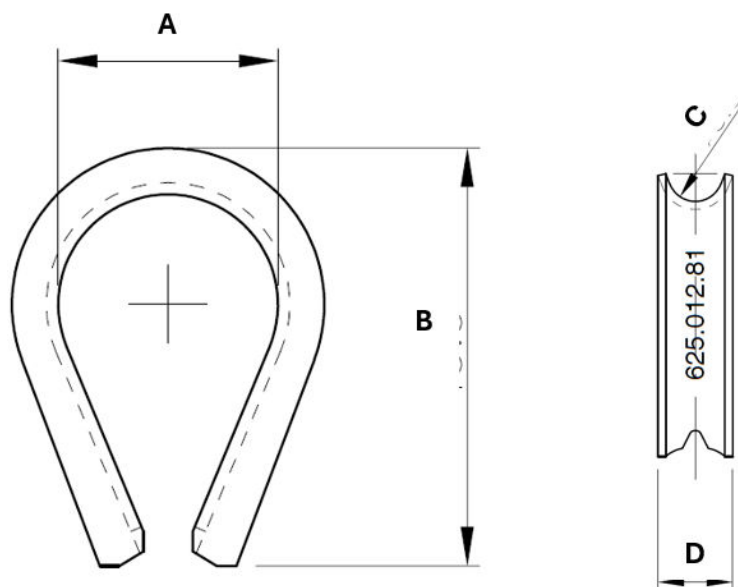
- This part is used for protecting the wire from wearing.

Material

- See table below



Part Number	BW Reference	A	B	C (Ø)	D	Material	Wire Section (mm ²)
625.012.712V1	-	-	-	-	-	St. Steel A2 / A4	10 - 12
625.012.712CU	-	-	-	-	-	Cu – ETP	10 - 12
625.012.81	-	22.5	43.5	8.5	11.5	St. Steel A2 / A4	16 - 25
625.012.71	-	14.5	27	8	10.5	Cu – ETP	16 - 25
625.012.91	-	-	-	-	-	St. Steel A2 / A4	65



INSULATORS

Cantilever Insulators

Application

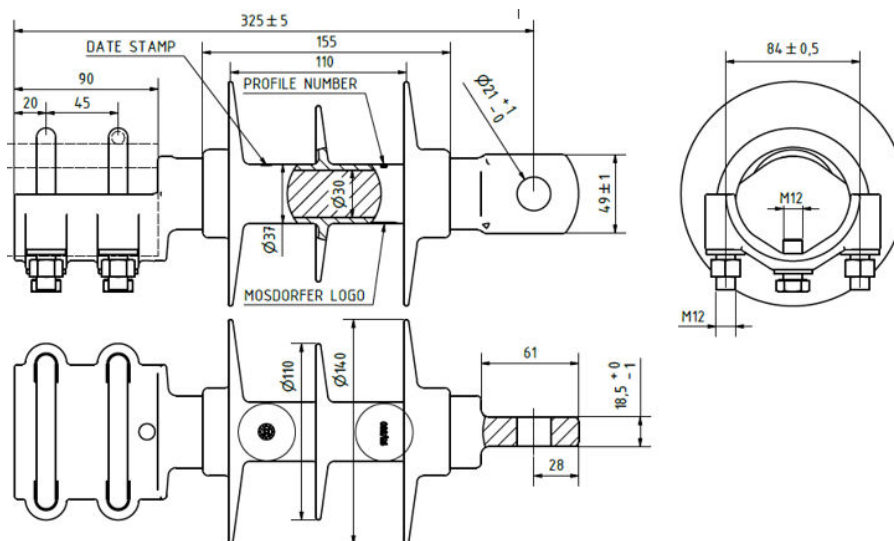
- 95/380 Tongue and 55 – 70 Pipe End 8kN

Material

- Housing: Injection moulded HTV Silicone with ATH Filler (Grey RAL 7040, min. 3mm thk)
- Composite core: Pultruded ECR-Glass Fibre and Epoxy Resin (Ø30mm Rod)
- End fittings: Steel – Hot Dip Galv. In acc. To ISO 1461 (min ave. 85µm)



Part Number	Power Frequency withstand Voltage (kV)	Lightening impulse withstand voltage (kV)	Minimum dry arcing distance (mm)	Minimum Creepage Distance (mm)	Specified Cantilever Load (kN)	Max Design Cantilever load (MDCL) (kN)	Specified Tensile Load (STL) (kN)	Number of Sheds	Ø	Weight (kg)
803 022 001	40	95	205	380	8	3	25	2/1	55 - 70	2.477
803 022 001 - 0001	40	95	205	380	8	3	25	2/1	38 - 50	3.1



Cantilever Insulators

Application

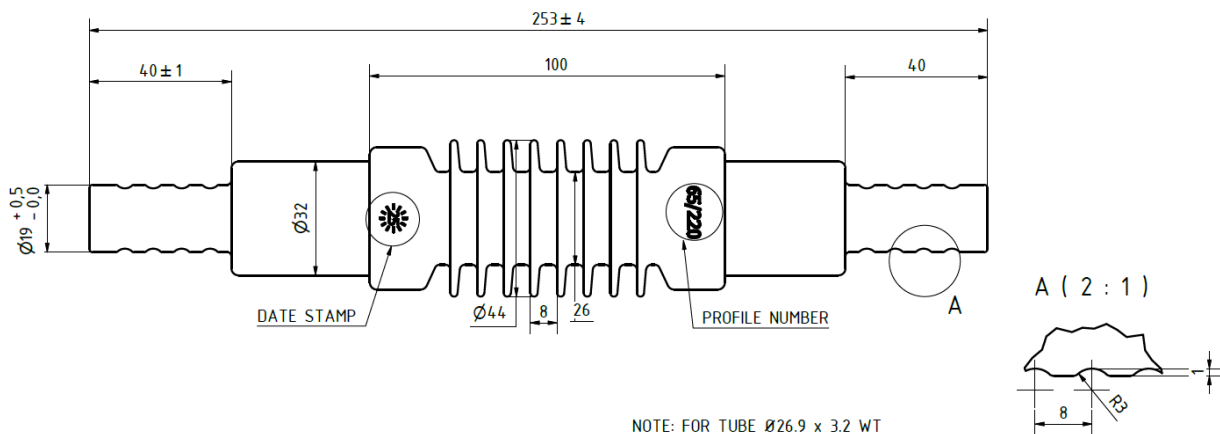
- Cantilever Insulator 65/220 Ø19 Fitting

Material

- Polymeric Housing: Injection Moulded HTV Silicone Rubber with ATH Filler (Grey, min. 3mm thk)
- Composite Core: Pultruded ECR-Glass Fibre & Epoxy Resin (Ø20mm Rod)
- End Fitting Steel: Hot Dip Galv. in acc. to EN ISO 1461 (min. ave. 85µm thk)



Part Number	Power Frequency withstand Voltage (kV)	Lightening impulse withstand voltage (kV)	Minimum dry arcing distance (mm)	Minimum Creepage Distance (mm)	Specified Cantilever Load (kN)	Max Design Cantilever load (MDCL) (kN)	Specified Tensile Load (STL) (kN)	Number of Sheds	Ø	Weight (kg)
801 052 001	15	65	95	220	2	1	30	8	19	0.749



Tension Insulator

Application

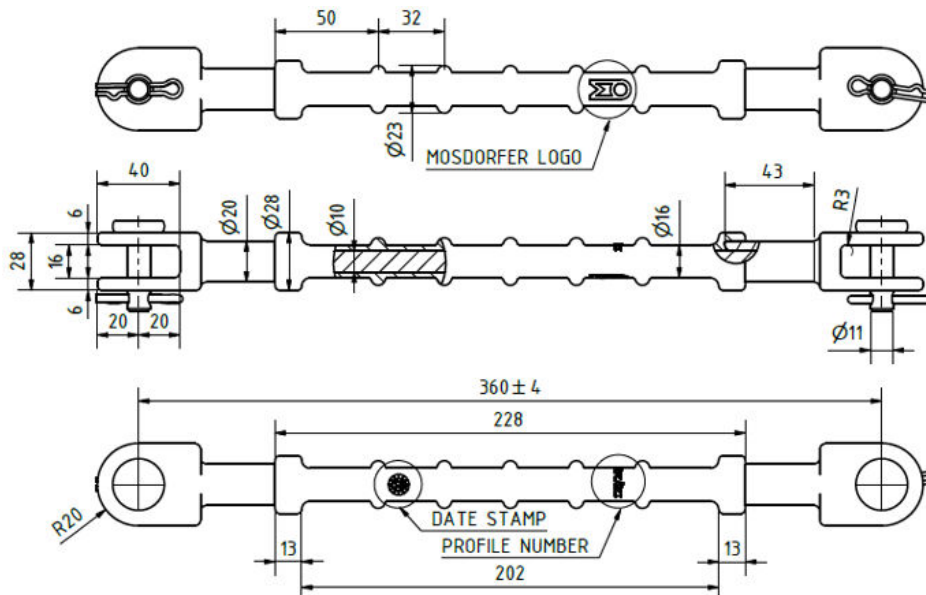
- Tension insulator 125/240 Clevis & Clevis 20 kN

Material

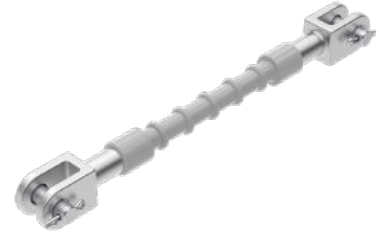
- Polymeric Housing: Injection moulded HTV Silicone Rubber with ATH Filler (Grey RAL 7040, min 3mm thk)
- Composite core: Pultruded ECR – Glass Fibre and Epoxy Resin (Ø 10mm Rod)
- End fitting Steel: Hot dip Galv. In acc. To EN ISO 1461. (min.ave. 85µm)



Part Number	BW Reference	Power Frequency withstand Voltage (kV)	Lightening impulse withstand voltage (kV)	Minimum dry arcing distance (mm)	Minimum Creepage Distance (mm)	Specified Mechanical Load (SML) (kN)	Max Design Cantilever load (MDCL) (kN)	Specified Tensile Load (STL) (kN)	Routine Test Load (RTL) (kN)	Number of Sheds	Weight (kg)
801 011 001	M46149-01-D	40	125	228	240	20	3	20	10	5	1.4



Tension Insulator



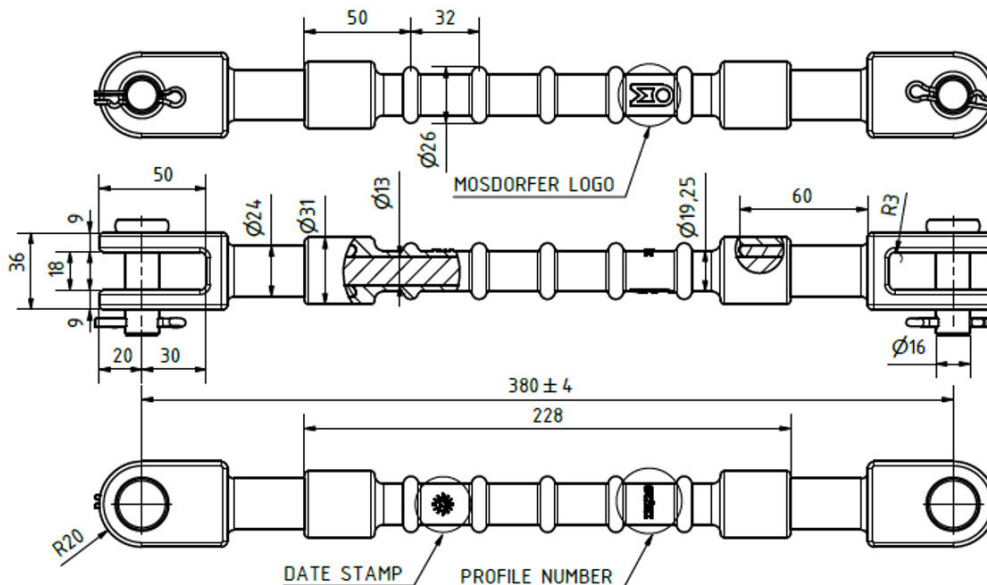
Application

- Tension insulator 125/240 Clevis & Clevis 70 kN

Material

- Polymeric Housing: Injection moulded HTV Silicone Rubber with ATH Filler (Grey RAL 7040, min 3mm thk)
- Composite core: Pultruded ECR – Glass Fibre and Epoxy Resin (Ø 10mm Rod)
- End fitting Steel: Hot dip Galv. In acc. To EN ISO 1461. (min.ave. 85µm)

Part Number	BW Reference	Power Frequency withstand Voltage (kV)	Lightening impulse withstand voltage (kV)	Minimum dry arcing distance (mm)	Minimum Creepage Distance (mm)	Specified Mechanical Load (SML) (kN)	Routine Test Load (RTL) (kN)	Number of Sheds	Weight (kg)
801 021 001	-	40	125	228	240	70	35	5	1.9



GRP Insulator

Application

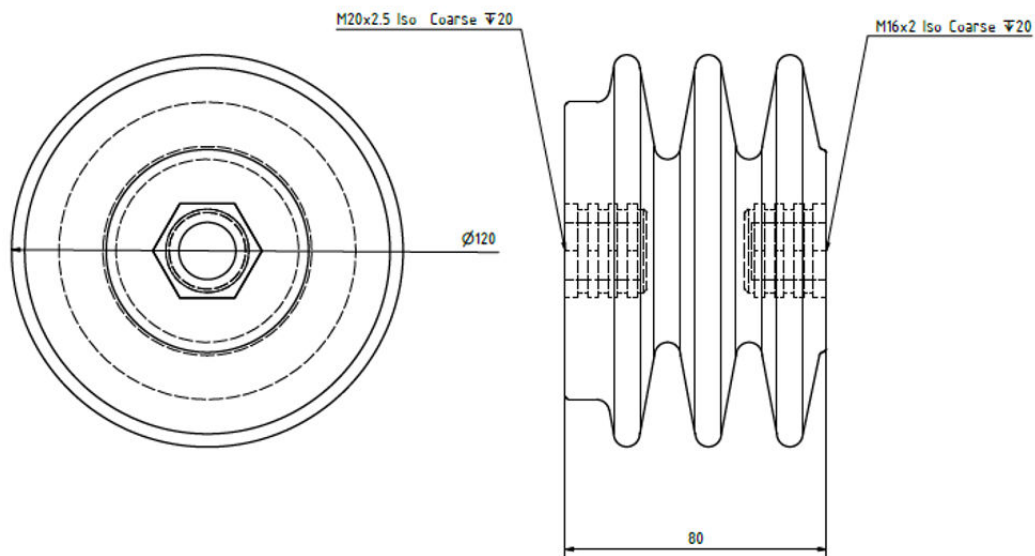
- Cantilever Insulator 65/200 M16-M20

Material

- Polymeric housing: flame retardant glass reinforced polyester
- End fittings: brass



Part Number	BW Reference	Power Frequency withstand Voltage (kV)	Lightening impulse withstand voltage (kV)	Minimum dry arcing distance (mm)	Minimum Creepage Distance (mm)	Specified Cantilever Load (Perpendicular to Track)(kN)	Specified Cantilever Load (In line with Track)(kN)	Specified Compression Load (kN)	Number of Sheds Small/ Large	Weight (kg)
801 042 001	M03991-01-A	15	65	100	200	6	12	60	3	1.3



Insulated Knuckle Bar Assembly

Application

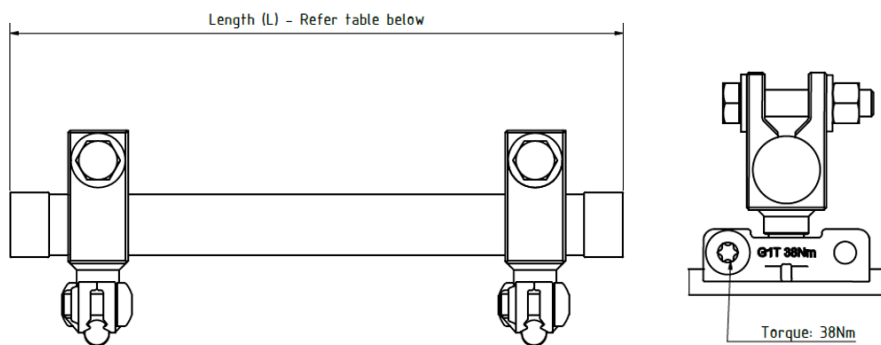
- Fixed distance separation of contact wire

Material

- GRP rod, Stainless Steel, Copper and Rubber Caps.



Part Number	BW Reference	Length (L) (mm)	Insulator	Registration Clamp Arm	Contact Wire Clamp
RCS-25-P-049-4	M41631-04-A	1000	RCS-25-P-051-4	RCS-25-P-050	304 741 001
RCS-25-P-049-3	M41631-01-A	750	RCS-25-P-052-3	RCS-25-P-050	304 741 001
RCS-25-P-049-2	M41631-02-A	500	RCS-25-P-051-2	RCS-25-P-050	304 741 001
RCS-25-P-049-1	M41631-03-A	250	RCS-25-P-051-1	RCS-25-P-050	304 741 001



Insulated Stitch

Application

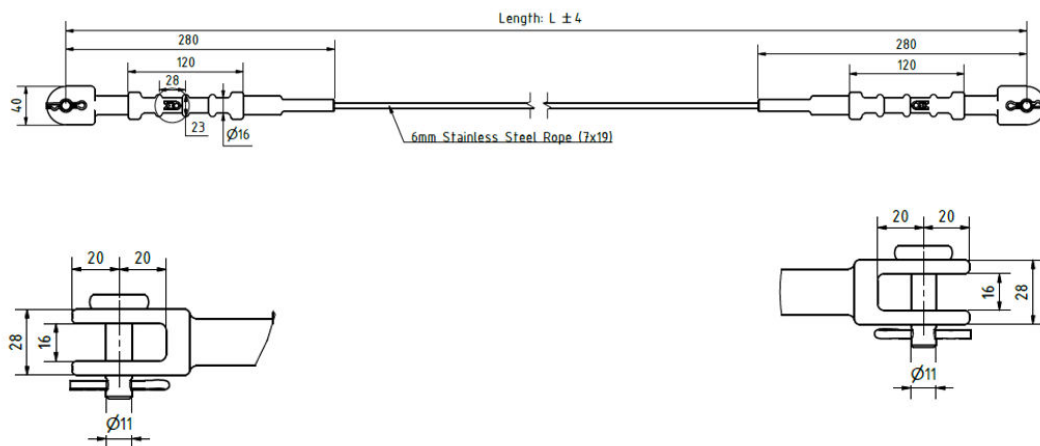
- Stitch insulator 75/135 Clevis & Clevis - L 20kN
Insulated Stitch without nuggets for fixed tension.

Material

- Polymeric Housing: Injection Moulded HTV Silicone Rubber with ATH Filler (Grey, min. 3mm)
- Composite Core: Pultruded ECR-Glass Fibre & Epoxy Resin (Ø10mm Rod)
- End Fitting Steel: Hot Dip Galv. in acc. to EN ISO 1461 (min. ave. 85µm)



Part Number	BW Reference	Power Frequency withstand Voltage (kV)	Lightening impulse withstand voltage (kV)	Minimum dry arcing distance (mm)	Minimum Creepage Distance (mm)	Specified Mechanical Load (SML) (Kn)	Routine Test Load (RTL) (kN)	Length (L) (mm)	Number of Sheds
801 031 001 – 10000	M45035-00-D-02	15	75	120	135	20	10	1000	3
801 031 001 – 15500	-	15	75	120	135	20	10	1550	3
801 031 001 – 30000	M45035-00-D-001	15	75	120	135	20	10	3000	3
801 031 001 – 50000	-	15	75	120	135	20	10	5000	3



Insulated Stitch with Nuggets

Application

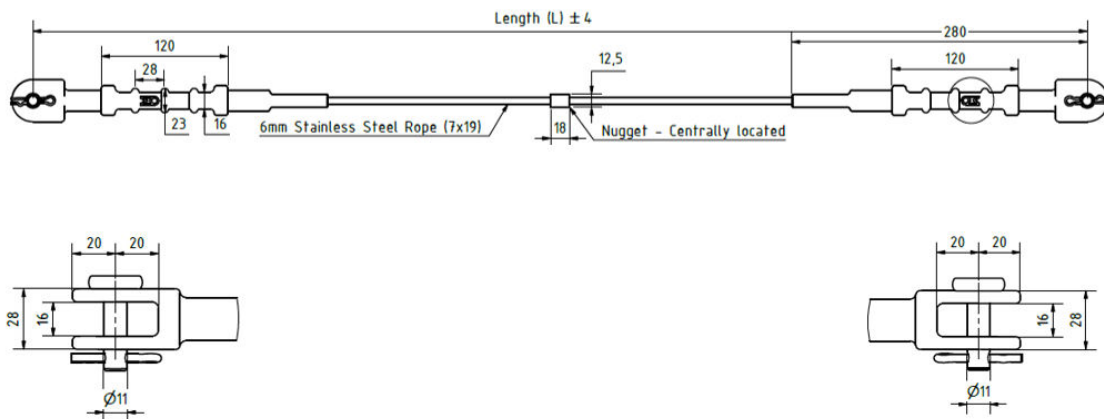
- Stitch insulator 75/135 Clevis & Clevis - L with Nuggets 20kN
- Insulated stitched with nuggets for auto tension.

Material

- Polymeric Housing: Injection Moulded HTV Silicone Rubber with ATH Filler (Grey, min. 3mm)
- Composite Core: Pultruded ECR-Glass Fibre & Epoxy Resin (Ø10mm Rod)
- End Fitting Steel: Hot Dip Galv. in acc. to EN ISO 1461 (min. ave. 85µm)



Part Number	BW Reference	Power Frequency withstand Voltage (kV)	Lightening impulse withstand voltage (kV)	Minimum dry arcing distance (mm)	Minimum Creepage Distance (mm)	Specified Mechanical Load (SML) (Kn)	Routine Test Load (RTL) (kN)	Length (L) (mm)	Number of Sheds
801 031 001 – 10001	M45035-00-D-004	15	75	120	135	20	10	1000	3
801 031 001 – 15501	M45035-00-D-005	15	75	120	135	20	10	1550	3
801 031 001 – 30001	M45035-00-D-003	15	75	120	135	20	10	3000	3
801 031 001 – 50001	M45035-00-D-006	15	75	120	135	20	10	5000	3



Insulated Stitch Assembly Single Contact

Application

- Stitch insulator 75/135 Clevis & Clevis - L with Nuggets 20kN
- Insulated stitched with nuggets for auto tension.

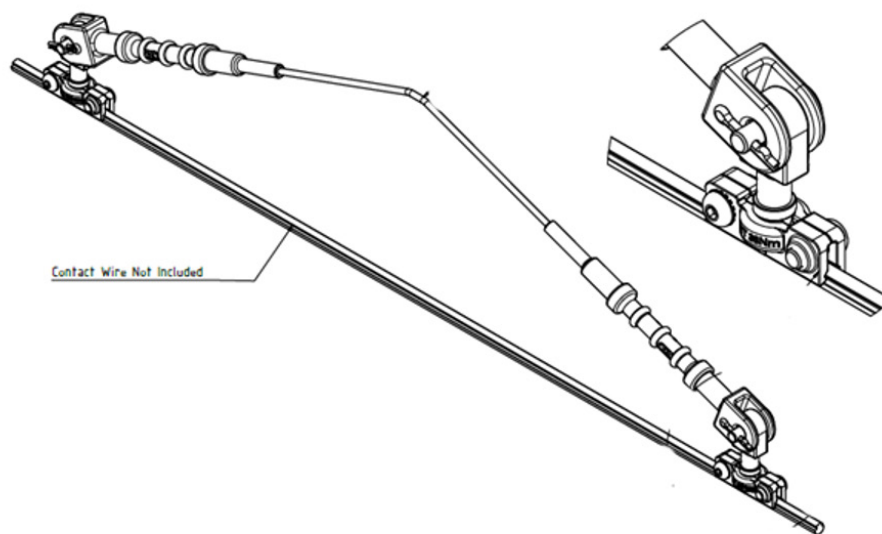
Material

- Polymeric Housing: Injection Moulded HTV Silicone Rubber with ATH Filler (Grey, min. 3mm)
- Composite Core: Pultruded ECR-Glass Fibre & Epoxy Resin (Ø10mm Rod)
- End Fitting Steel: Hot Dip Galv. in acc. to EN ISO 1461 (min. ave. 85µm)



Part Number	BW Reference	Length (L) (mm)
-------------	--------------	-----------------

RCS-25-A-048	-	1000
RCS-25-A-049	M45071-00-A	1550
RCS-25-A-050	-	3000
RCS-25-A-051	-	5000



Insulated Stitch Assembly Twin Contact Wire

Application

- Insulated Stitch Assembly w/o Nugget - Twin Wire

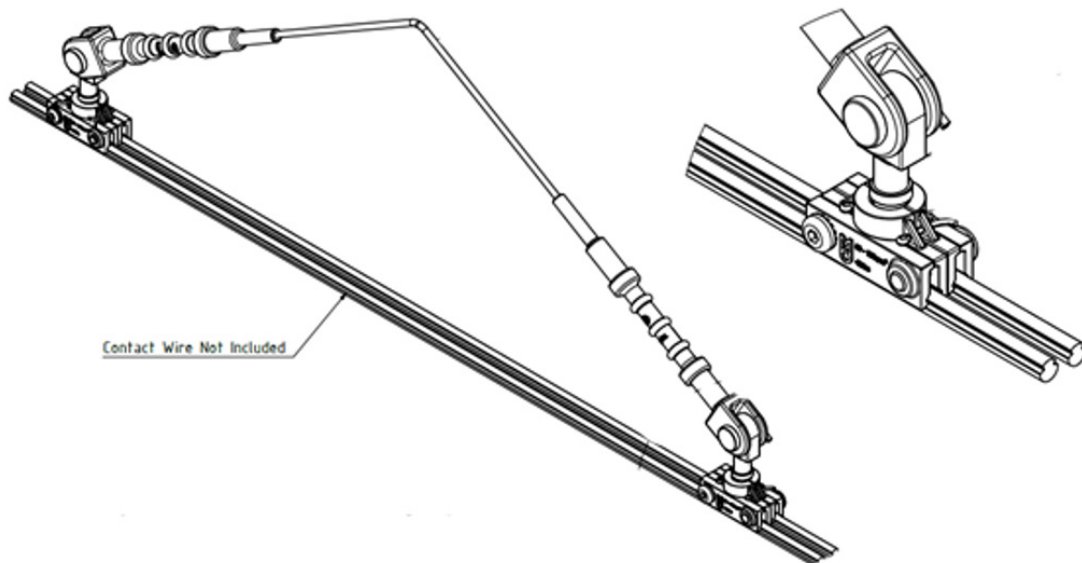
Material

- Polymeric Housing: Injection Moulded HTV Silicone Rubber with ATH Filler (Grey, min. 3mm)
- Composite Core: Pultruded ECR-Glass Fibre & Epoxy Resin (Ø10mm Rod)
- End Fitting Steel: Hot Dip Galv. in acc. to EN ISO 1461 (min. ave. 85µm)



Part Number	BW Reference	Length (L) (mm)
RCS-25-A-060	-	1000
RCS-25-A-061	M45071-13-A	1550
RCS-25-A-062	-	3000
RCS-25-A-063	-	5000

Part Number	BW Reference	Length (L) (mm)
RCS-25-A-060	-	1000
RCS-25-A-061	M45071-13-A	1550
RCS-25-A-062	-	3000
RCS-25-A-063	-	5000



Insulated Stitch Assembly with Levers Single Contact

Application

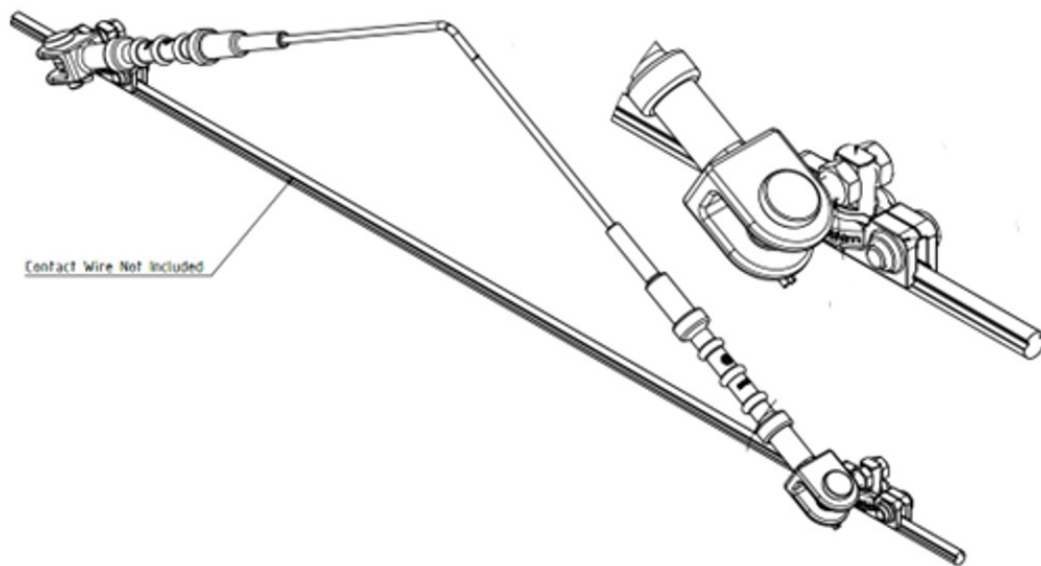
- Insulated Stitch with Levers

Material

- Polymeric Housing: Injection Moulded HTV Silicone Rubber with ATH Filler (Grey, min. 3mm)
- Composite Core: Pultruded ECR-Glass Fibre & Epoxy Resin (Ø10mm Rod)
- End Fitting Steel: Hot Dip Galv. in acc. to EN ISO 1461 (min. ave. 85µm)



Part Number	BW Reference	Length (L) (mm)
RCS-25-A-036	M45070-01-A	1000
RCS-25-A-037	M45070-08-A	1550
RCS-25-A-038	M45070-02-A	3000
RCS-25-A-039	-	5000



Insulated Stitch Assembly with Levers Twin

Application

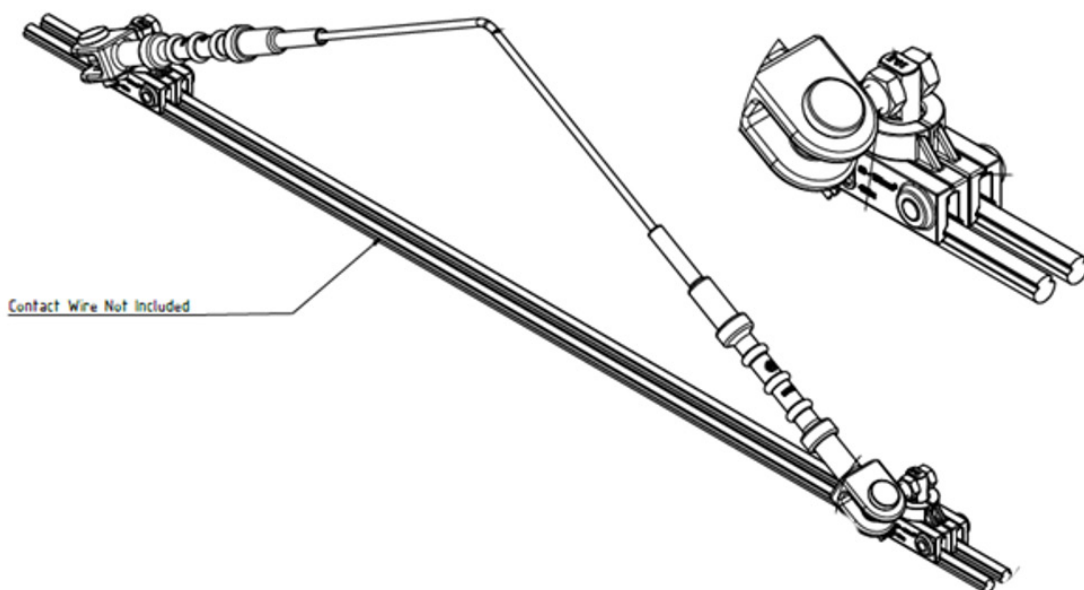
- Insulated Stitch with Levers

Material

- Polymeric Housing: Injection Moulded HTV Silicone Rubber with ATH Filler (Grey, min. 3mm)
- Composite Core: Pultruded ECR-Glass Fibre & Epoxy Resin (Ø10mm Rod)
- End Fitting Steel: Hot Dip Galv. in acc. to EN ISO 1461 (min. ave. 85µm)



Part Number	BW Reference	Length (L) (mm)
RCS-25-A-064	-	1000
RCS-25-A-065	M45070-09-A	1550
RCS-25-A-066	-	3000
RCS-25-A-067	-	5000



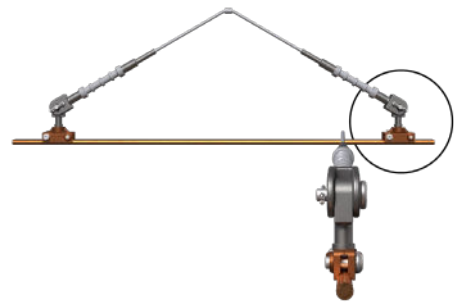
Insulated Stitch Assembly with Nuggets Single Contact

Application

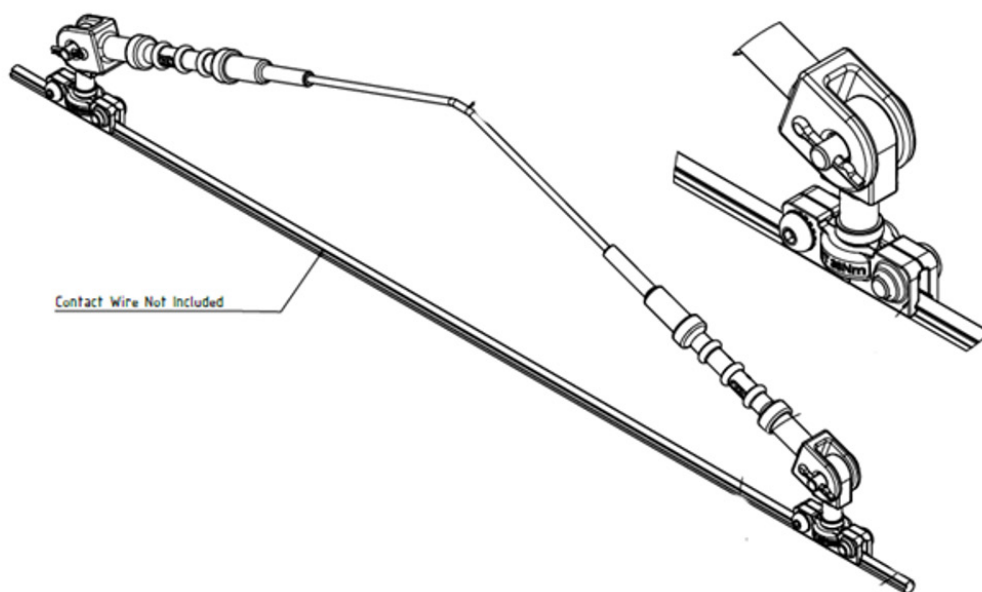
- Insulated Stitch Assembly with Nugget - Single Contact

Material

- Polymeric Housing: Injection Moulded HTV Silicone Rubber with ATH Filler (Grey, min. 3mm)
- Composite Core: Pultruded ECR-Glass Fibre & Epoxy Resin (Ø10mm Rod)
- End Fitting Steel: Hot Dip Galv. in acc. to EN ISO 1461 (min. ave. 85µm)



Part Number	BW Reference	Length (L) (mm)
RCS-25-A-052	M45071-04-A	1000
RCS-25-A-053	-	1550
RCS-25-A-054	M45071-03-A	3000
RCS-25-A-055	-	5000



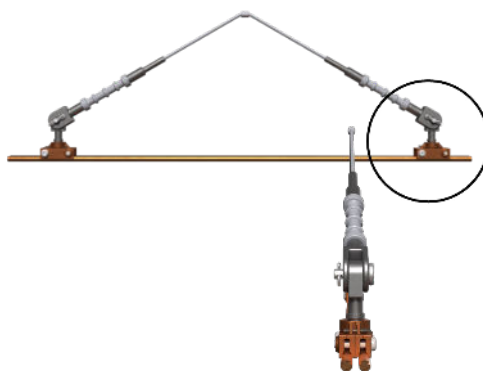
Insulated Stitch Assembly with Nuggets Twin Contact

Application

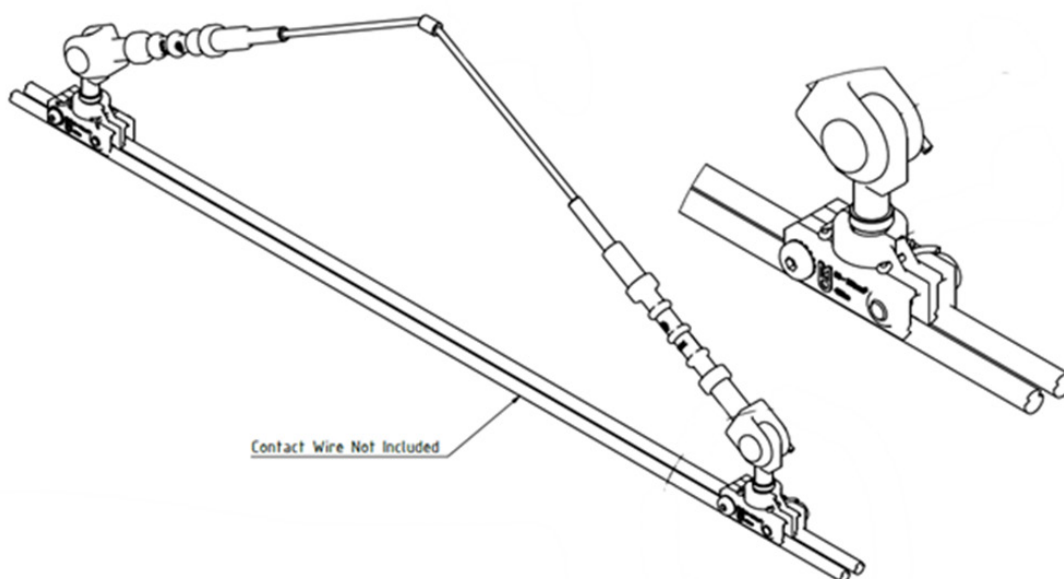
- Insulated Stitch Assembly with Nugget - Twin Contact

Material

- Polymeric Housing: Injection Moulded HTV Silicone Rubber with ATH Filler (Grey, min. 3mm)
- Composite Core: Pultruded ECR-Glass Fibre & Epoxy Resin (Ø10mm Rod)
- End Fitting Steel: Hot Dip Galv. in acc. to EN ISO 1461 (min. ave. 85µm)



Part Number	BW Reference	Length (L) (mm)
RCS-25-A-056	M45071-06-A	1000
RCS-25-A-057	M45071-10-A	1550
RCS-25-A-058	M45071-08-A	3000
RCS-25-A-059	-	5000



Insulated Stitch Assembly Levers with Nuggets Single Contact Wire

Application

- Insulated Stitch Assembly with Levers and Nugget Single Contact Wire

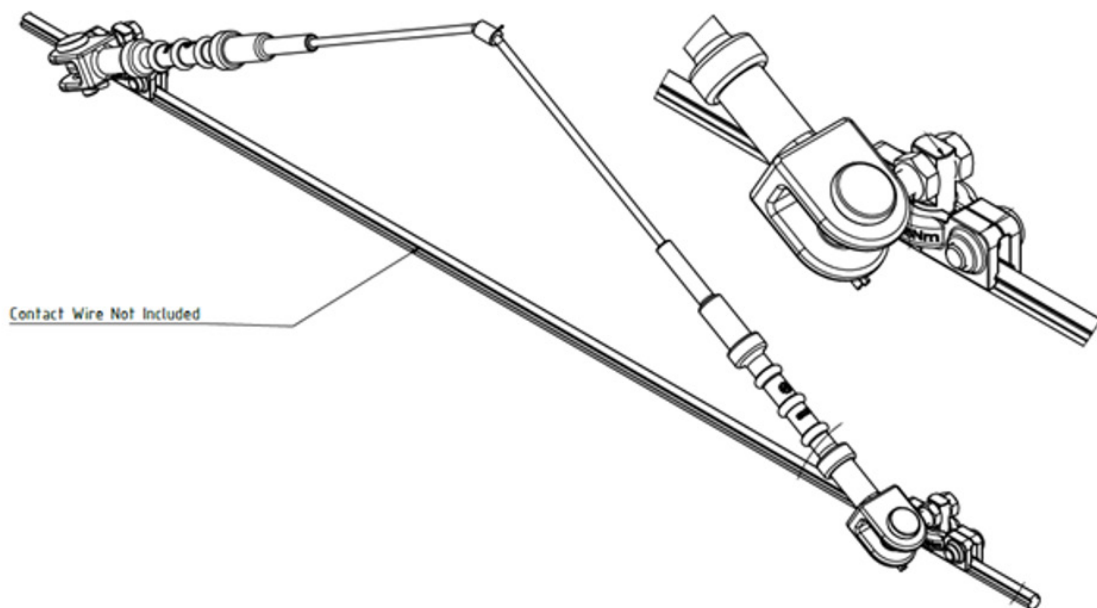
Material

- Polymeric Housing: Injection Moulded HTV Silicone Rubber with ATH Filler (Grey, min. 3mm)
- Composite Core: Pultruded ECR-Glass Fibre & Epoxy Resin (Ø10mm Rod)
- End Fitting Steel: Hot Dip Galv. in acc. to EN ISO 1461 (min. ave. 85µm)



Part Number	BW Reference	Length (L) (mm)
RCS-25-A-040	M45070-04-A	1000
RCS-25-A-041	M45070-06-A	1550
RCS-25-A-042	M45070-03-A	3000
RCS-25-A-043	-	5000

Part Number	BW Reference	Length (L) (mm)
RCS-25-A-040	M45070-04-A	1000
RCS-25-A-041	M45070-06-A	1550
RCS-25-A-042	M45070-03-A	3000
RCS-25-A-043	-	5000



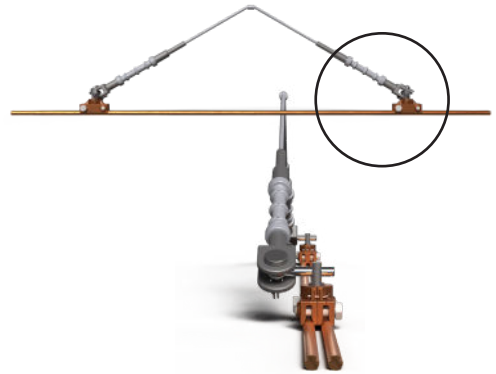
Insulated Stitch with Levers and Nugget Twin Contact Wire

Application

- Insulated Stitch Assembly with Levers and Nugget Twin Contact Wire

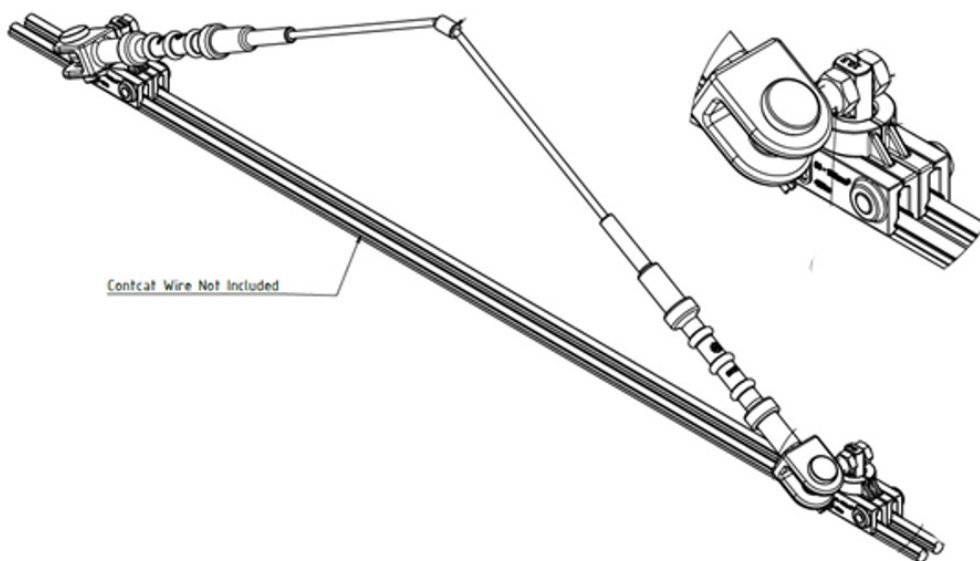
Material

- Polymeric Housing: Injection Moulded HTV Silicone Rubber with ATH Filler (Grey, min. 3mm)
- Composite Core: Pultruded ECR-Glass Fibre & Epoxy Resin (Ø10mm Rod)
- End Fitting Steel: Hot Dip Galv. in acc. to EN ISO 1461 (min. ave. 85µm)



Part Number	BW Reference	Length (L) (mm)
-------------	--------------	-----------------

RCS-25-A-044	-	1000
RCS-25-A-045	M45070-07-A	1550
RCS-25-A-046	-	3000
RCS-25-A-047	-	5000



POLE BRACKETS

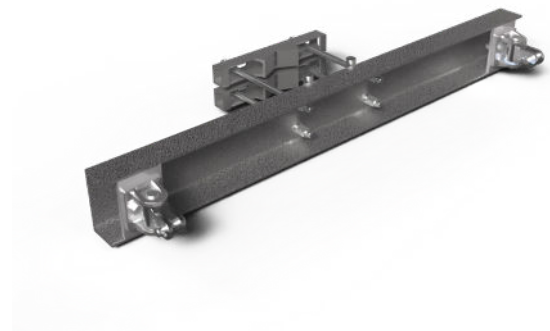
Overlap Bracket Assembly

Application

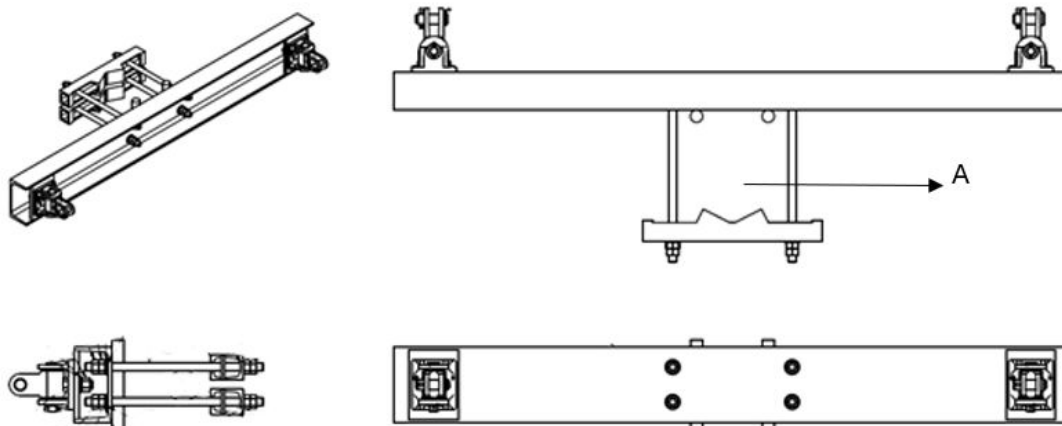
- Overlap Bracket Assembly.
- Clamps can be rotated horizontally or vertically.

Material

- Galvanized steel.



Part Number	BW Reference	A Back Bracket Diameter (Ø)
RCS-24-A-005	M45332-01-A	219
RCS-24-A-020	M45332-02-A	273
RCS-25-A-002	M45332-03-A	168



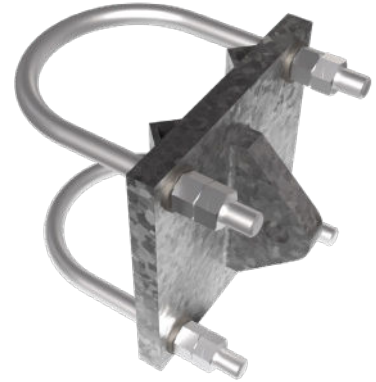
Pole Bracket Assembly

Application

- Backstay anchor bracket includes hex nut, washers and u-bolts.

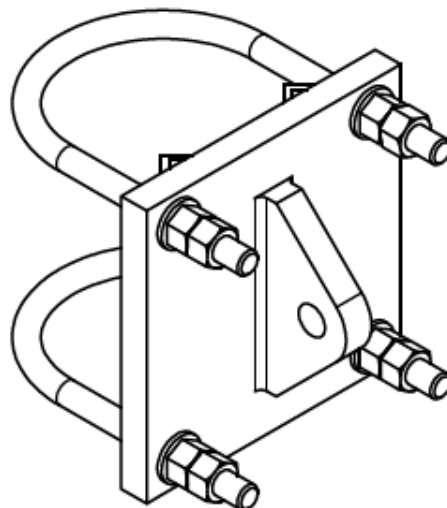
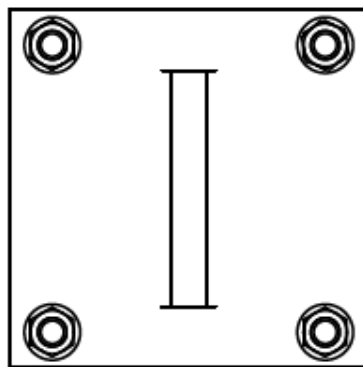
Description

- Steel Grade S275 - Galvanised



Part Number BW Reference Diameter Ø

RCS-25-A-014	-	168
RCS-25-A-028		219
RCS-25-A-015	-	273



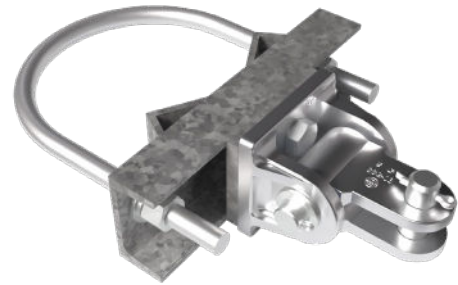
Universal Single Cantilever Bracket

Application

- Universal Single Cantilever Bracket - Assy

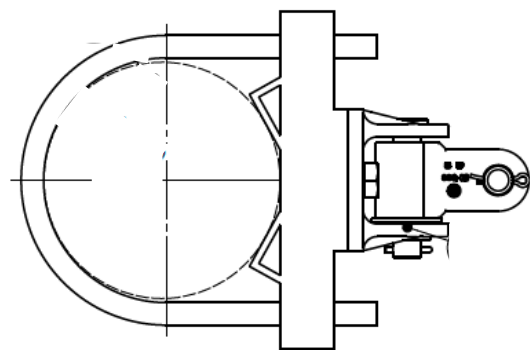
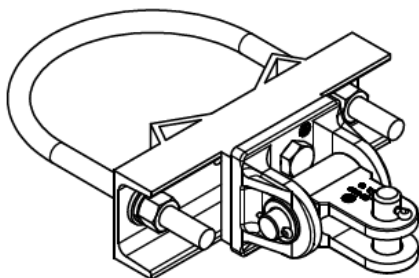
Description

- Included; Spring Washer, U-bolt, Hex Nut, Plain Washer, Channel Detail, Swivel Bracket, Cantilever Support with Clevis and Metric Hex Screw.



Part Number **BW Reference** **Diameter Ø**

RCS-25-A-016	-	168
RCS-25-A-017	-	219
RCS-25-A-018	-	273



Diameter Ø

* Suitable for Vertical and Horizontal installations (Swivel bracket and cantilever support can be rotated 90 degs)

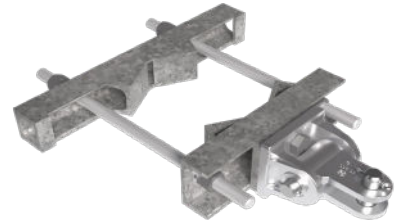
Universal Single Cantilever Back Bracket

Application

- Universal Single Cantilever Bracket - Assy

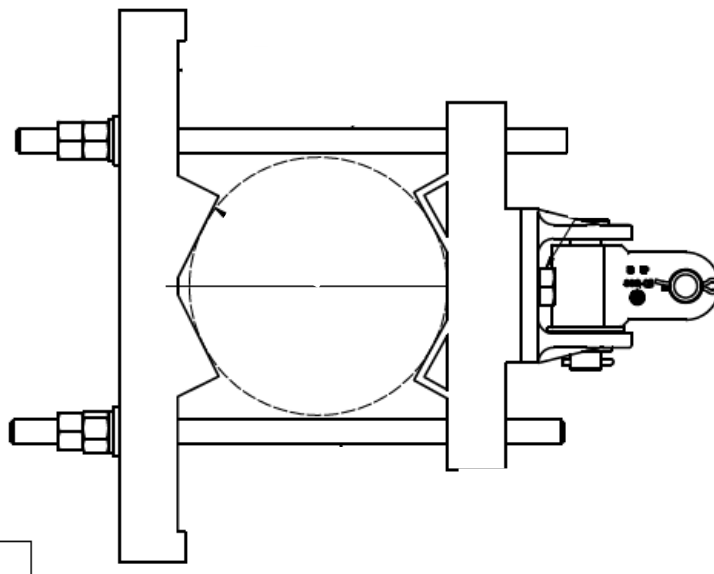
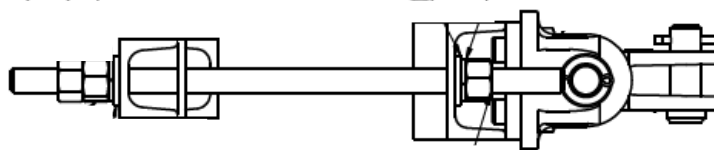
Description

- Included; Spring Washer, U-bolt, Hex Nut, Plain Washer, Channel Detail, Swivel Bracket, Cantilever Support with Clevis and Metric Hex Screw.



Part Number BW Reference Diameter Ø

RCS-25-A-019	-	168
RCS-25-A-020	-	219
RCS-25-A-021	-	273



* Suitable for Vertical and Horizontal installations (Swivel bracket and cantilever support can be rotated 90 degs)

SURGE ARRESTORS

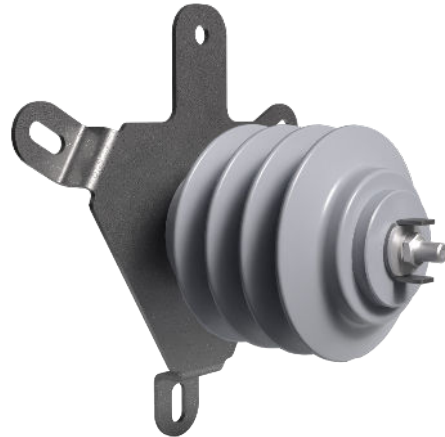
Surge Arrestors

Application

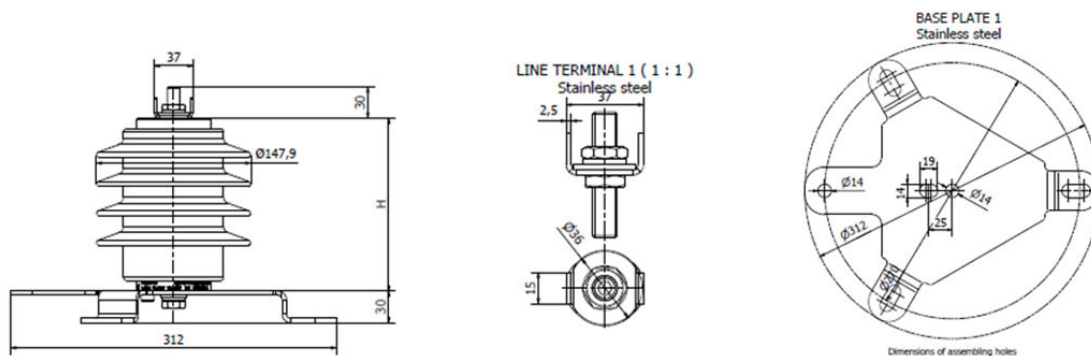
- Surge Arrestor
- According to IEC 60099-4

Material

- Silicone
- Stainless Steel



Part Number	BW Reference	Description	Rated Voltage (kV)	MCOV (kV)	Lightening Impulse Withstand (Kv)	Power Frequency Wet Withstand (kV)	Creepage Distance (mm)	Phase to Ground (mm)	Phase to Phase (mm)
PROXAR-IVN 2 DC 11100	HE60MC10	Surge Arrestor	2	2	75	17	318	100	180



Surge Arrestor Mounting Bracket

Application

- Mounting bracket for a surge divertor.

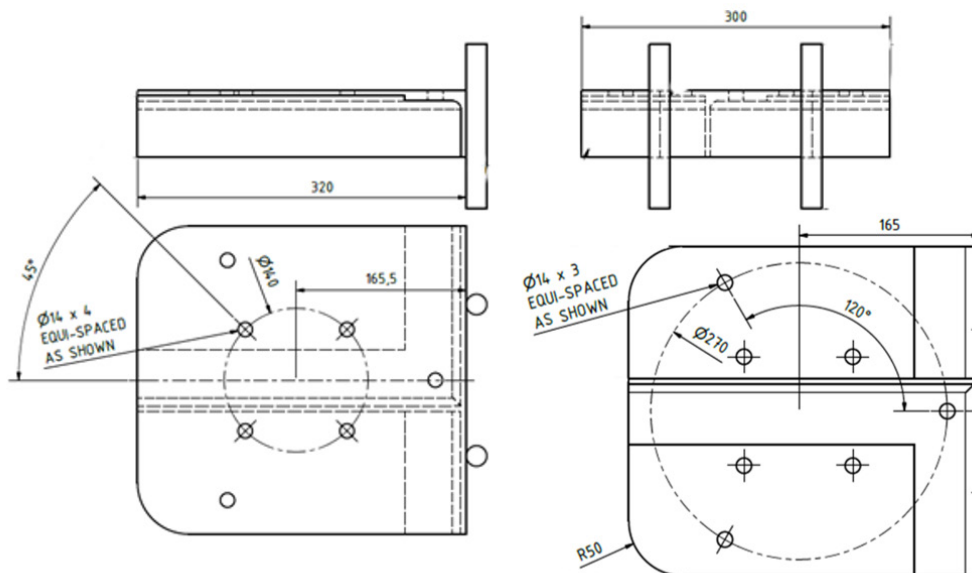
Material

- Steel S275 JR
- Hot Dip Galvanised EN ISO 1561



Part Number	BW Reference	General Tolerance	Holes and Chamfers
-------------	--------------	-------------------	--------------------

24-03-P-B-004	M41624-02-FB	UNI EN 586-3	0.5 x 45
---------------	--------------	--------------	----------



TENSIONING

Tensorex C+



Application

- For railways and Tramways
- Best solution for portals, tunnels, noise protection walls and platforms.
- Inner city installations where low visual impact is requested.

Description

- An automatic tensioning device that uses the force of a spiral spring to constantly tension the railway contact wire and/or messenger wire. It therefore effectively compensates the expansion caused by fluctuating daytime and nighttime temperatures as well as the change in the season while keeping the tension at a constant level.

Part Number	BW Reference	Size	Springs	Compensation Length	Pull Force (kg)	Weight (Kg)
000700696	-	TRC +1	9.5 x 60	800 to 450	450 to 800 (4.5 to 8 kN)	90
000700697	-	TRC +2	9.5 x 60	1000 to 400	500 to 1800 (5.0 to 18 kN)	120
000700698	-	TRC +3	9.5 x 60	1100 to 450	850 to 2400 (8.5 to 24 kN)	150
000700699	-	TRC +4	9.5 x 60	1100 to 450	1350 to 3000 (13.5 to 30 kN)	180
000700695	-	TRC +5	11 x 60	1100 to 675	1500 to 2800 (15 to 28 kN)	235
000700694	-	TRC +1	11 x 60	1100 to 550	2000 to 4000 (20 to 40 kN)	290
000700693	-	TRC +1	11 x 60 XL	1100 to 650	2400 to 4000 (24 to 40kN)	350

*please note that not all combinations of pull force and compensation length are possible due to technical limitations. Please contact Mosdorfer Rail for all compensation lengths.

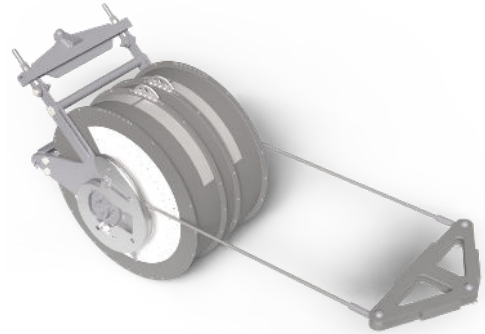
Tensorex C+ 3D

Application

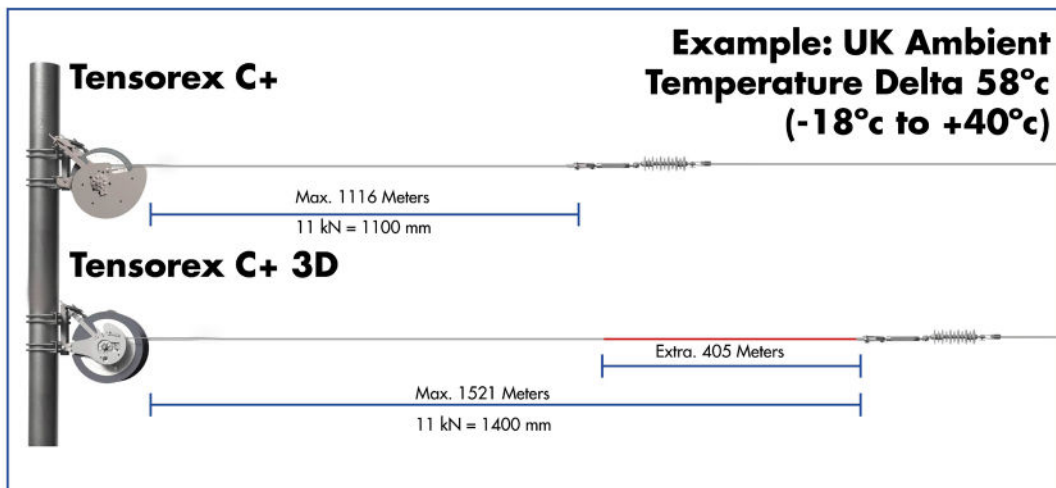
- For railways and Tramways
- Best solution for portals, tunnels, noise protection walls and platforms.
- Inner city installations where low visual impact is requested.

Description

- Tensorex C+ 3D is a tensioning device designed to allow for an increased compensation capability in comparison to the standard Tensorex C+ range. The Tensorex C+ 3D range is capable of upto 40% additional compensation length.



Part Number	BW Reference	Size	Compensation Length (mm)	Pull Force (kg)	Weight (kg)
000700696	-	TRC + 3D 2	1200 to 1300	1000	200
000700697	-	TRC + 3D 3	1200 to 1490	1100 to 1500	250
000700698	-	TRC + 3D 4	1165 to 1345	2000 to 2250	300
000700699	-	TRC + 3D 5	1100 to 1480	2250 to 3000	360



TENSOREX C+ SPRING TENSIONING SYSTEM



Tensorex Sense

Application

- For Railways and Tramways. Tensorex Sense can be retrofitted to any Tensorex C+ model to create a smart tensioning device. This allows status reporting and condition monitor from a smart device, creating a truly maintenance free asset.

Description

- Tensorex Sense consists of a solar supported control box and a rotational and temperature sensor which is fitted to the Tensorex C+. Once installed and calibrated the Tensorex Sense transmits signals to a cloud-based dashboard. Therefore, inspection and status functionality can be monitored from any smart device.

Part Number

Tensorex Sense

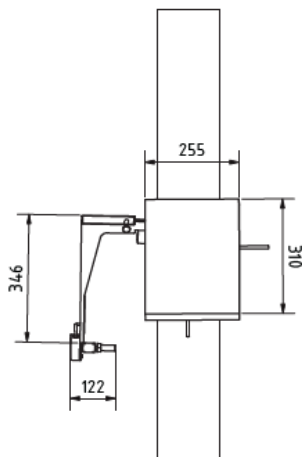


FIGURE 1. FRONT VIEW (DIMENSIONS MM (NTS))

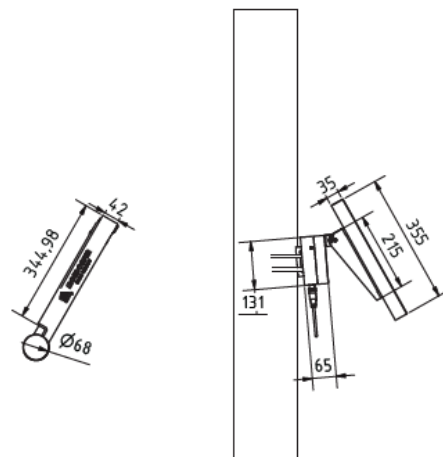


FIGURE 2. SIDE VIEW (DIMENSIONS MM (NTS))

TUBES

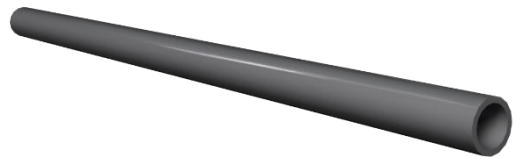
Aluminium Tubes

Application

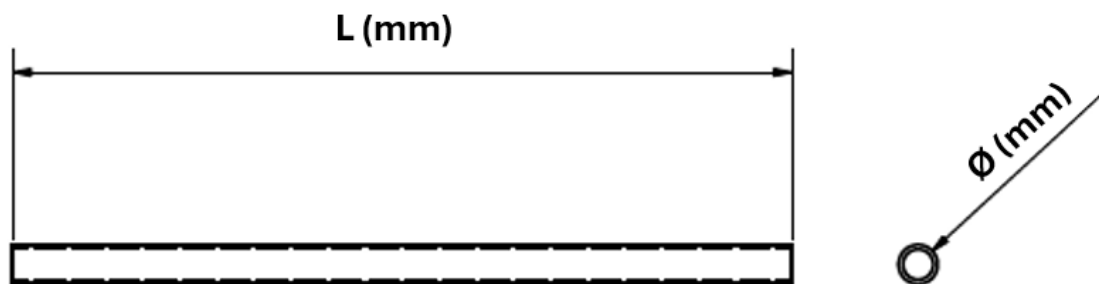
- Structure and support for Cantilevers

Description

- Aluminium - 6082 - T6



Part Number	BW Reference	Length (mm)	Minimum Wall Thickness (mm)	Diameter Ø	Weight (Kg)
RCS-AL-1155	-	1100	6	55	2.743
RCS-AL-1255	-	1200	6	55	2.993
RCS-AL-1270	-	1200	6	70	3.909
RCS-AL-1670	-	1600	6	70	5.212
RCS-AL-1755	-	1700	6	55	4.239
RCS-AL-1770	-	1700	6	70	5.537
RCS-AL-1870	-	1800	6	70	5.863
RCS-AL-1955	-	1900	6	55	4.738
RCS-AL-1970	-	1900	6	70	6.189
RCS-AL-2570	-	2500	6	70	8.143



* bespoke variants all available in 100 mm increments.

Steel Tubes

Application

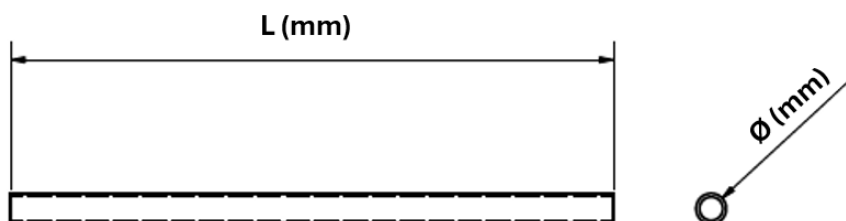
- Structure and support for Cantilevers

Description

- Steel: 5275 – JR
- Hot Dipped Galvinised per ISO 1461



Part Number	BW Reference	Length (mm)	Minimum Wall Thickness (mm)	Diameter Ø	Weight (Kg)
RCS-ST-1142	-	1100	4	42	4.167
RCS-ST-1242	-	1200	4	42	4.546
RCS-ST-1342	-	1300	4	42	4.924
RCS-ST-1442	-	1400	4	42	2.565
RCS-ST-1660	-	1600	5	60	10.891
RCS-ST-1742	-	1700	4	42	6.440
RCS-ST-1860	-	1800	5	60	14.383
RCS-ST-1942	-	1900	4	42	10.121
RCS-ST-1960	-	1900	5	60	12.932
RCS-ST-2060	-	2000	4	60	15.981
RCS-ST-2142	-	2100	5	42	8.222
RCS-ST-2160	-	2100	4	60	16.780
RCS-ST-2242	-	2200	5	42	8.614
RCS-ST-2560	-	2500	4	60	17.078
RCS-ST-2642	-	2600	5	42	13.850
RCS-ST-2660	-	2600	4	60	7.145
RCS-ST-2742	-	2700	5	42	14.383
RCS-ST-2760	-	2700	4	60	18.444
RCS-ST-2942	-	2900	5	42	15.448
RCS-ST-2960	-	2900	4	60	23.172
RCS-ST-3060	-	3000	5	60	20.346



* bespoke variants all available in 100 mm increments.

Tube Caps

Application

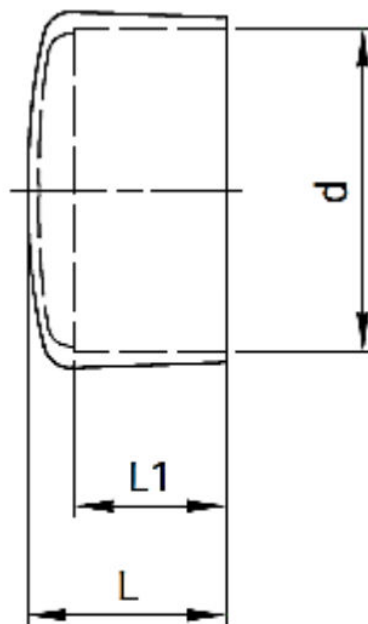
- Tube Cap

Description

- Black Vinyl



Part Number	BW Reference	Description	Length (L)	Inside Length (L1)	Diameter Ø (d)	Tube	Weight (kg)
RCS-24-P-009	8WL21814-1	Tube Cap	57	50	44	60	0.33
RCS-24-P-018	8WL21814-2	Tube Cap			55		
RCS-24-P-010	8WL21814-3	Tube Cap	57	53	60	42	0.021
RCS-24-P-019	8WL21814-4	Tube Cap			70		



Pole Caps

Application

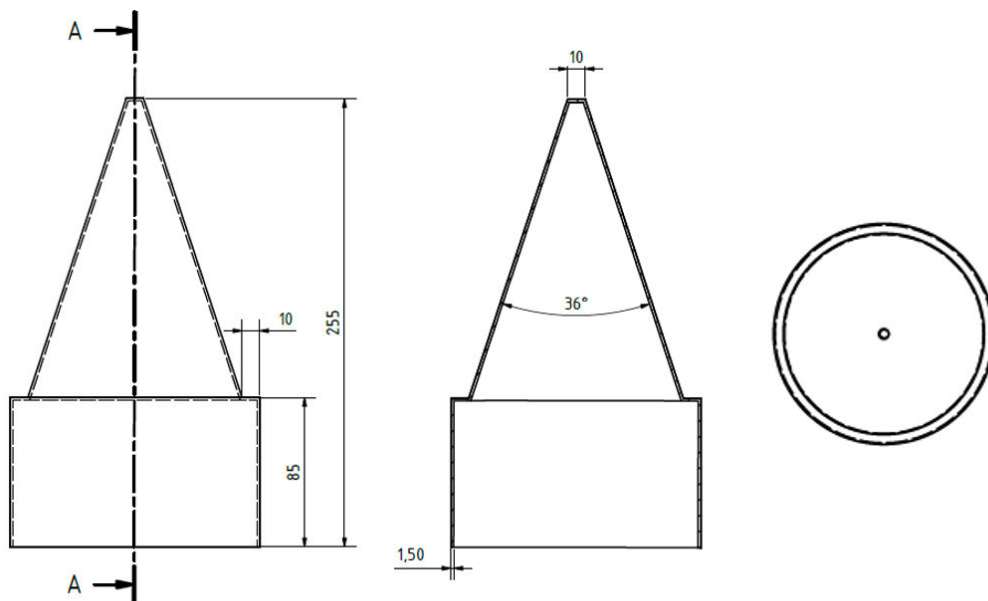
- Pole Caps

Material

- Aluminium



Part Number	BW Reference	Description	Diameter Ø (mm)	A(°)	Weight (kg)
RCS-24-P-016	M46130-00-D	Pole Cap	139	36	0.916
244004016	M4631-01-D	Pole Cap	168	45	1.128
244004014	M4632-01-D	Pole Cap	219	59	1.523
244004013	M4633-01-D	Pole Cap	273	72	2.056
RCS-24-P-017	M4634-01-D	Pole Cap	323	82	2.436



TURNBUCKLES

EYE - EYE

Application

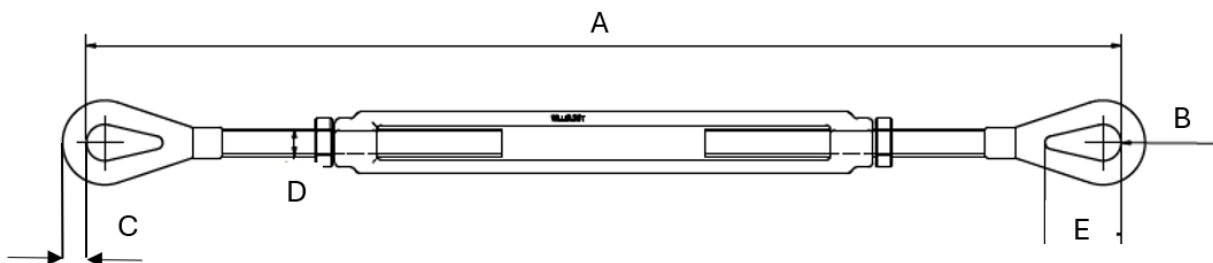
- Turnbuckle EYE/EYE

Description

- Steel Galvanized per ISO 1461



Part Number	BW Reference	Cross Section Ø	A Length min - max (mm)	B (mm)	C (mm)	D Ø (mm)	E (mm)	Max. Working Load (kg)	Breaking Load (kg)	Weight (Kg)
RCS-24-P-911	M41642-04-D	3/4"	584 - 889	25	17	19	52.5	2360	11800	2.8
RCS-24-P-912	M41642-07-D	1/2"	490 - 795	18	11	12	35	1000	5000	1.0
RCS-24-P-910	M4162-01-D	3/4"	725 - 1175	12.5	17	19	52.5	2360	11800	3.691



JAW - JAW

Application

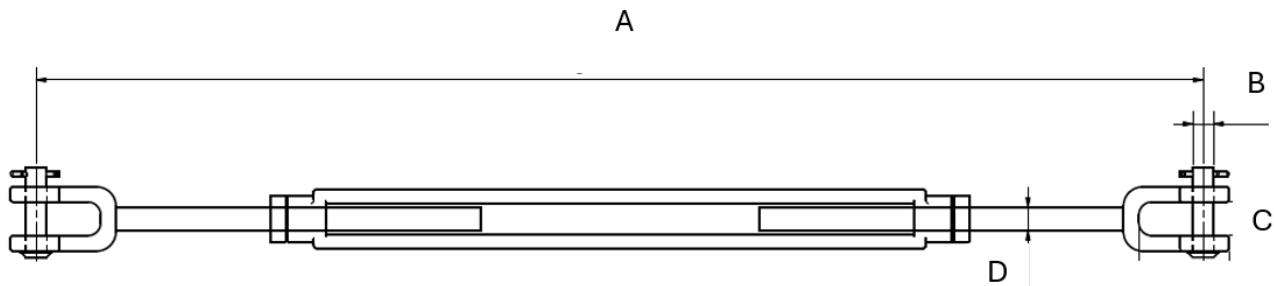
- Turnbuckle JAW/JAW

Description

- Steel Galvanized per ISO 1461



Part Number	BW Reference	Cross Section Ø	A Length min - max (mm)	B Pin Ø(mm)	C (mm)	D Ø (mm)	Max. Working Loa (kg)	Breaking Load (kg)	Weight (Kg)
RCS-24-P-913	M41642-04-D	3/4"	734 - 1194	16	26	18	2360	11800	3.5
RCS-24-P-914	M41642-05-D	3/4"	584 - 889	16	26	19	2360	11800	3.1
RCS-24-P-915	M41642-10-D	1"	829 - 1286	21.8	32	24.5	4540	22700	7.9



TURNBUCKLES

EYE - JAW



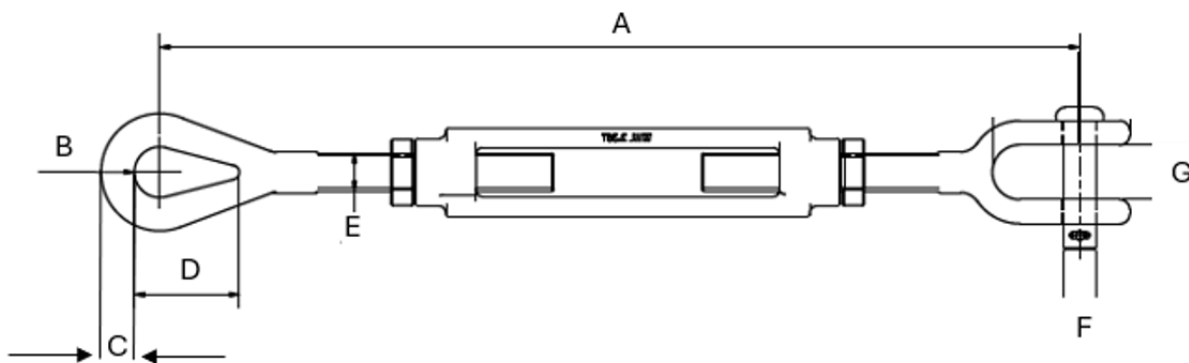
Application

- Turnbuckle EYE/JAW

Description

- Steel Galvanized per ISO 1461

Part Number	BW Reference	Cross Section Ø	A Length min - max (mm)	B (mm)	C (mm)	D Pin Diameter Ø (mm)	E Ø (mm)	F Ø (mm)	G Ø (mm)	Max. Working Loa (kg)	Breaking Load (kg)	Weight (Kg)
RCS-24-P-916	M41642-03-D	3/4"	432 - 584	16	26	18	19	16	27	2360	11800	2.2
RCS-24-P-917	M41642-08-D	3/4"	584 - 889	16	26	19	18	16	26	2360	11800	2.5
RCS-24-P-918	M41642-09-D	1/2"	338 - 490	21.8	32	24.5	12	9	18	1000	5000	0.5



BACKSTAY

Anchor Tie Rod Assembly

Application

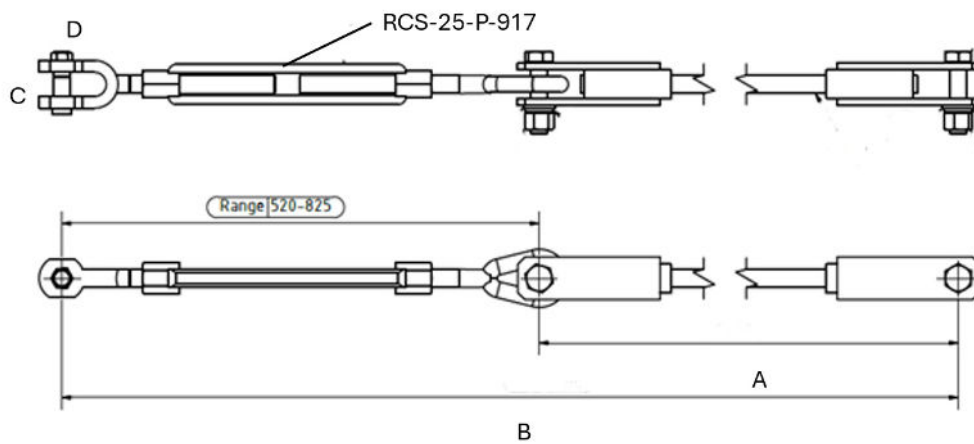
- Tie rod assembly; Backstay assembly
- Maximum Working Load: 23.15 kN

Material

- Galvanized, Steel



Part Number	BW Reference	Description	Length A (mm)	Length B (mm)	C (mm)	D (mm)
RCS-24-A-027	M41351-01-A	Tie Rod	5050	5700	26	16
RCS-24-A-026	M41351-03-A	Tie Rod	5450	6100	26	16
RCS-25-A-025	M41351-14-A	Tie Rod	5950	6600	26	16



* bespoke variants all available in 100 mm increments.

Balance Plates

Application

- Split mechanical loads

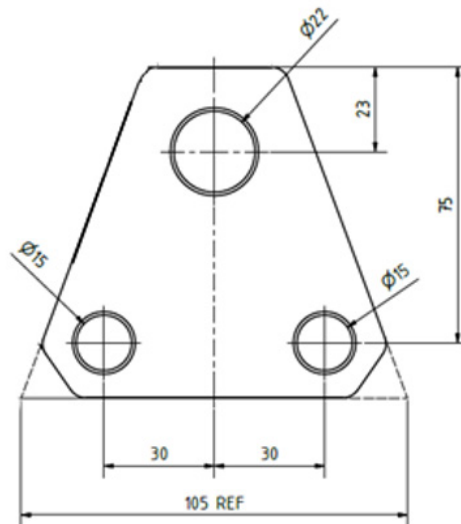
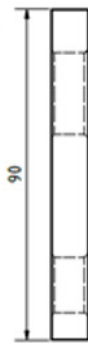
Description

- Steel Grade S275 - Galvanised



Part Number BW Reference

24-00-P-C-001 M41642-08-D



SPARES

M10 U - Bolt Assembly

Application

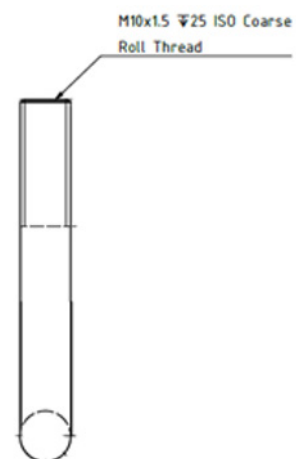
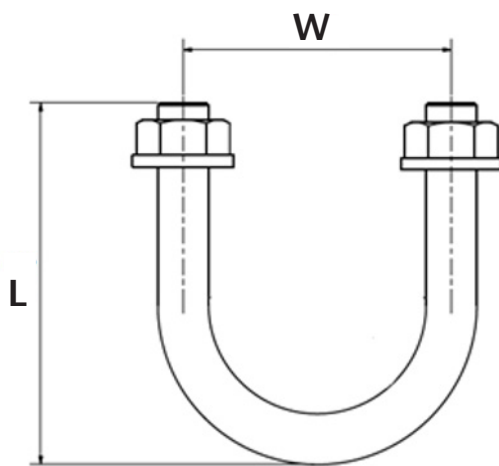
- Fasten components to secure various components to the track or structure.

Material

- Stainless Steel (304/A2-70)



Part Number	BW Reference	Diameter Tube Ø	W (mm)	L (mm)
RCS-25-P-039	M45337-01-A	43	53	71.5
RCS-25-P-040	-	55	66	93
RCS-25-P-041	-	60	71	90.5
RCS-25-P-042	-	70	81	105.5



10 mm Pins

Application

- For fixing and positioning.

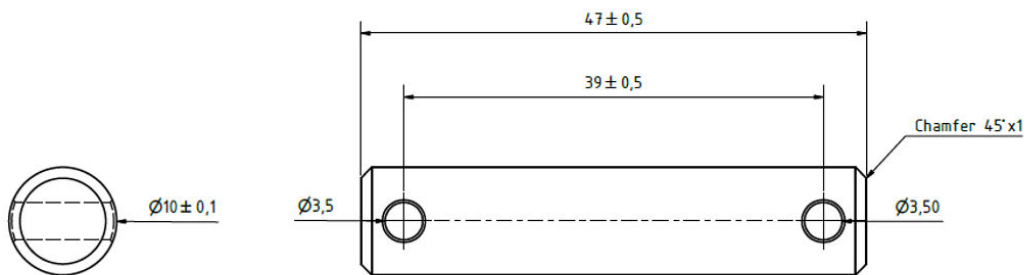
Material

- Stainless Steel GRADE 316 S31



Part Number	BW Reference	Diameter (mm)Ø
-------------	--------------	----------------

RCS-25-P-055	M41208-04-D	10
--------------	-------------	----



BW Ref: M41208-04-D

Standard Pin

Application

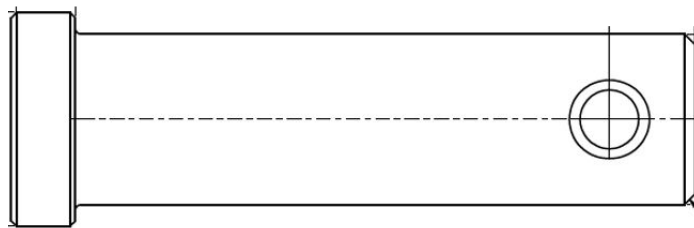
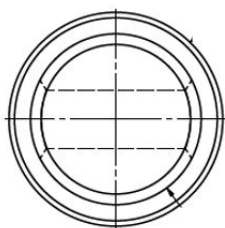
- Pin adaptor 12 DIA x 42

Material

- AISI 304



Part Number	BW Reference	Ø (mm)	Length (mm)	Weight (kg)
043262-00	M42224-02-D	12	45.5	0.045
RCS-24-P-022	M42224-03-D	16	58	0.105
RCS-24-P-023	M42224-04-D	20	65	0.183



16 mm Pin Bracket Foot

Application

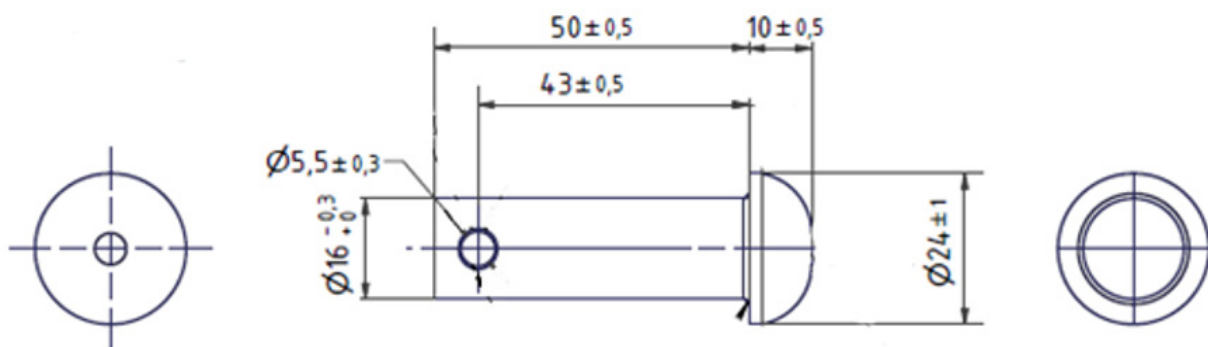
- Pin adaptor 16 mm

Material

- Stainless steel AISI 304



Part Number	BW Reference	Ø (mm)	Length (mm)	Weight (kg)
042731-01	M42224-01-D	16	50	0.102



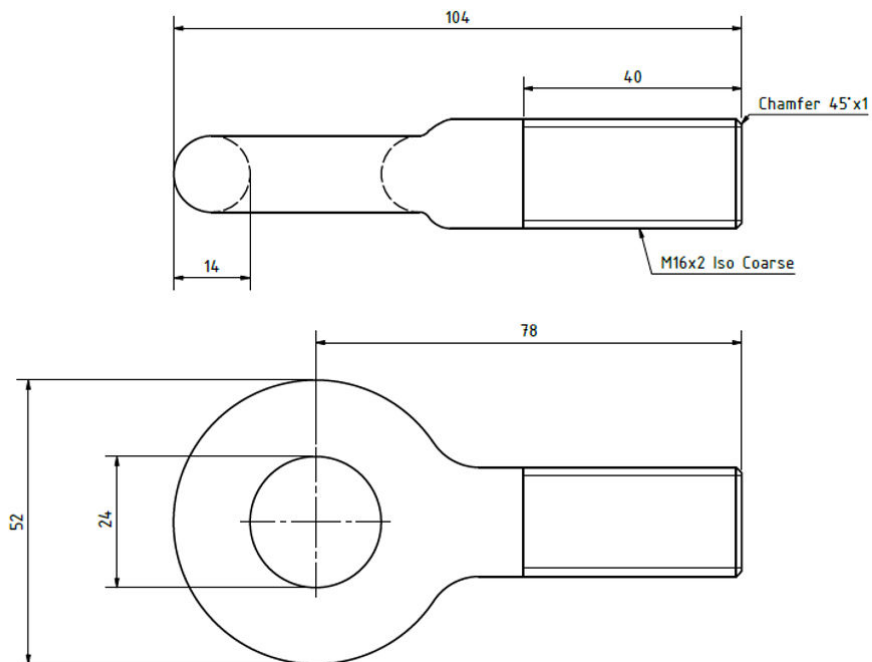
Round Eye Bolt

Material

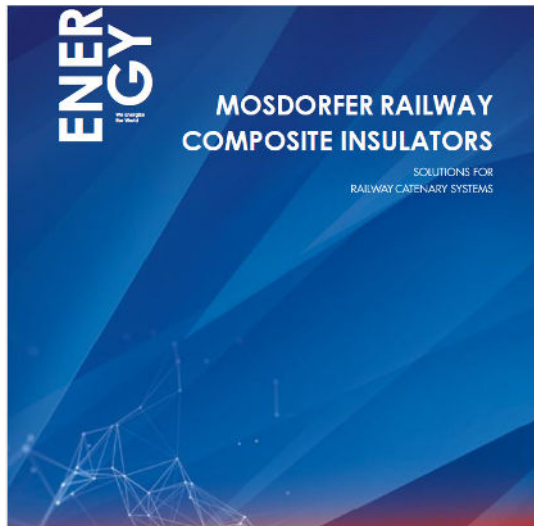
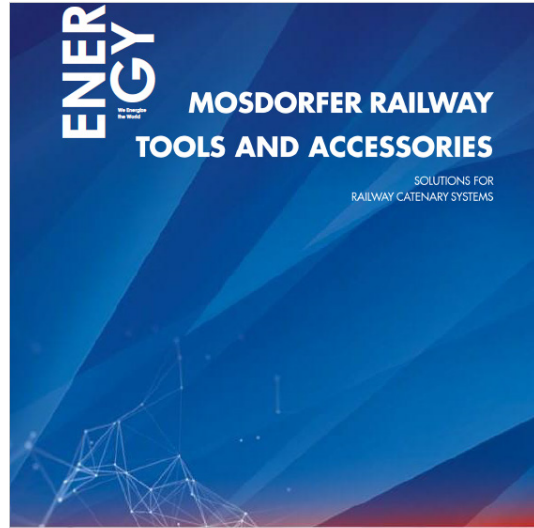
- Mild Steel
- Hot Dip Galvanised EN ISO 1461



Part Number	BW Reference	Description
RCS-25-P-056	M40207-01-D	M16 SST Round Eye Bolt - Dia 14 - 24 Cross Hole



OUR CATALOGUES



Mosdorfer Upresa Rail S.A.U.
C/Empordà 7, Polígono Industrial Congost
08403 Granollers, Spain
Phone +34 938 40 03 65
mosdorfer.upresa@mosdorfer.com

Mosdorfer Rail Ltd.
14B Orgreave Place, Orgreave, Sheffield S13 9NP, UK
Phone +44 114 38 78 370
ordersrailuk@mosdorfer.com

Mosdorfer Rail S.r.l.
Via Achille Grandi 46, 20017 Rho (MI), Italy
Phone +39 02 64 08 81 42
inforail.it@mosdorfer.com

Mosdorfer India Pvt. Ltd
403C, Wing B1, Marathon Innova, Opp Peninsula Corporate
Park, Lower parel, Mumbai 400013, India
Phone +91 22 2492 6393 94
office.india@mosdorfer.com



ENERGY

WE ENERGIZE
THE WORLD

05-2026

Mosdorfer Upresa Rail S.A.U.
C/Empordà 7, Polígono Industrial Congost
08403 Granollers, Spain
Phone +34 938 40 03 65
mosdorfer.upresa@mosdorfer.com

Mosdorfer Rail Ltd.
14B Orgreave Place, Orgreave, Sheffield S13 9NP, UK
Phone +44 114 38 78 370
ordersrailuk@mosdorfer.com

Mosdorfer Rail S.r.l.
Via Achille Grandi 46, 20017 Rho (MI), Italy
Phone +39 02 64 08 81 42
inforail.it@mosdorfer.com